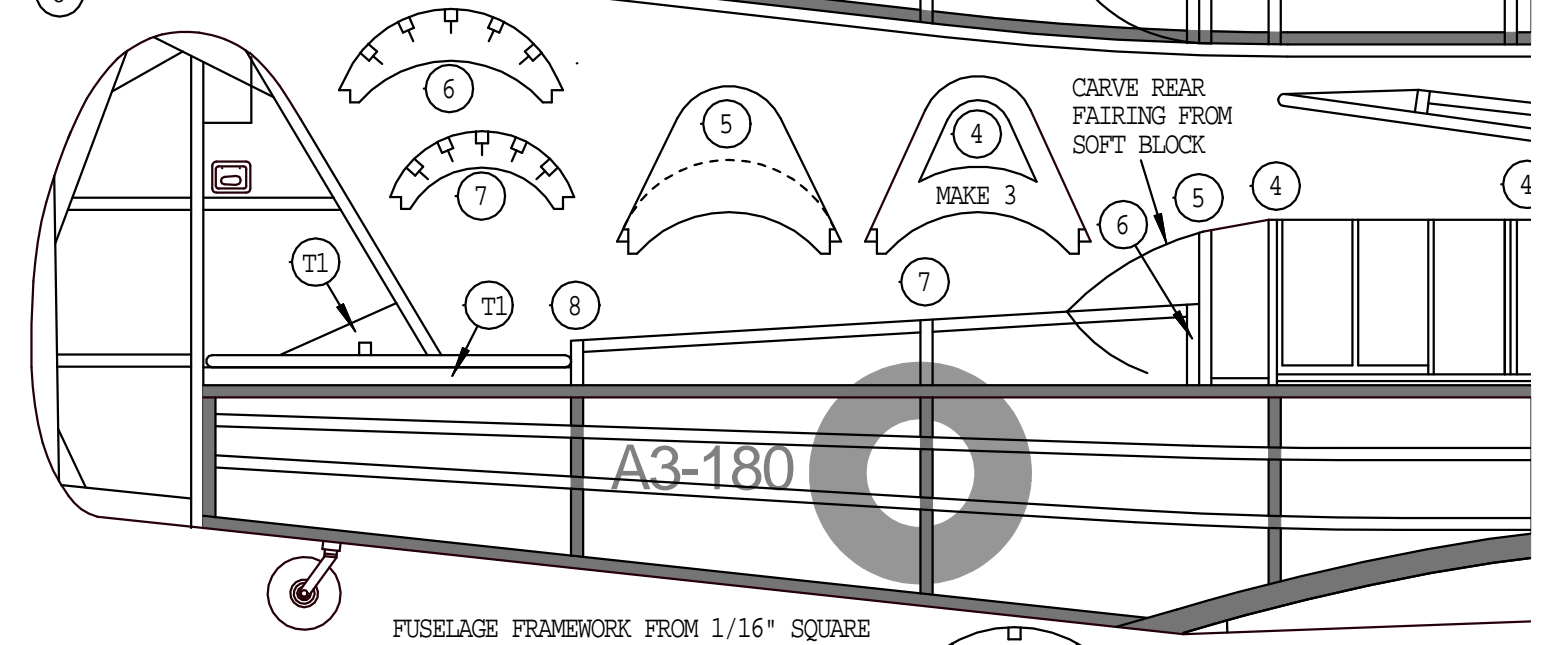
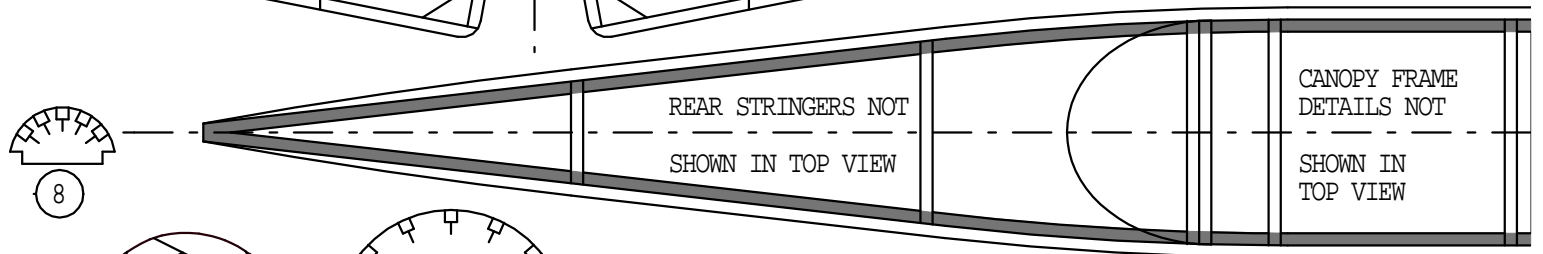
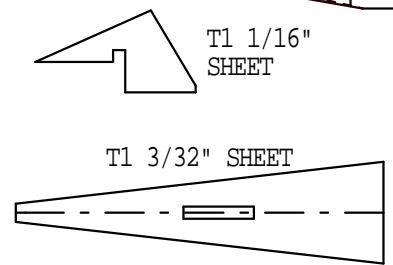
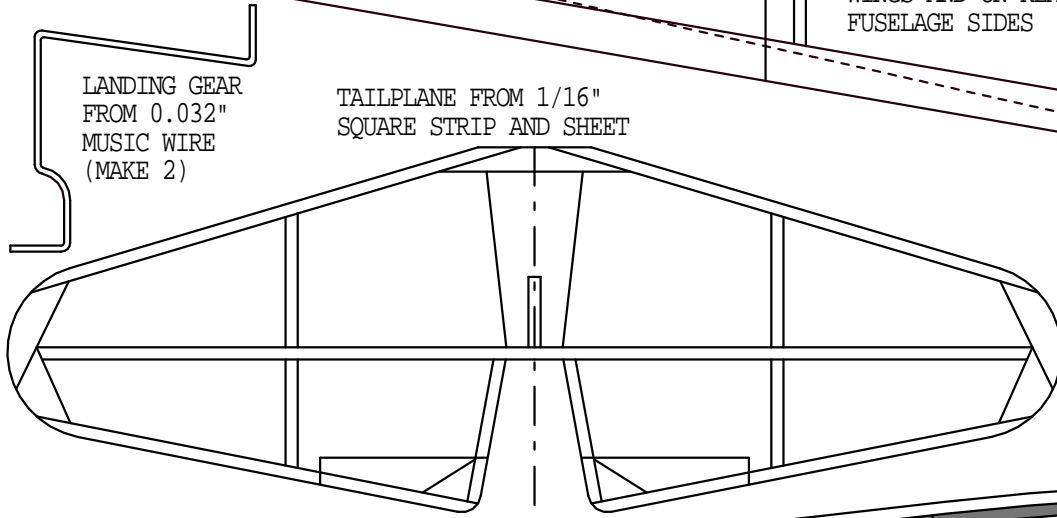
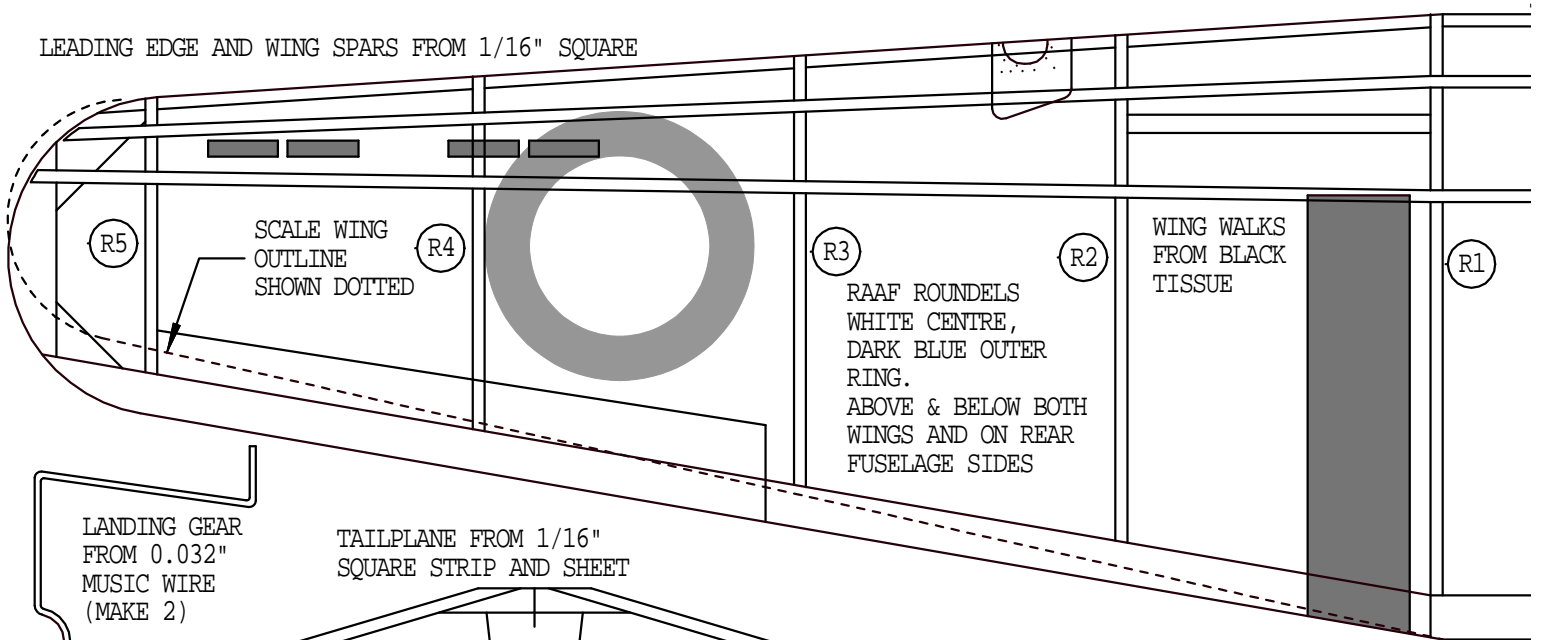
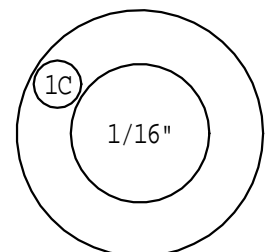
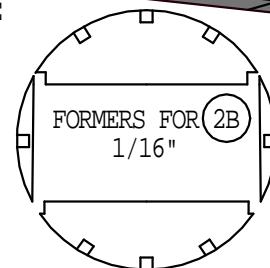


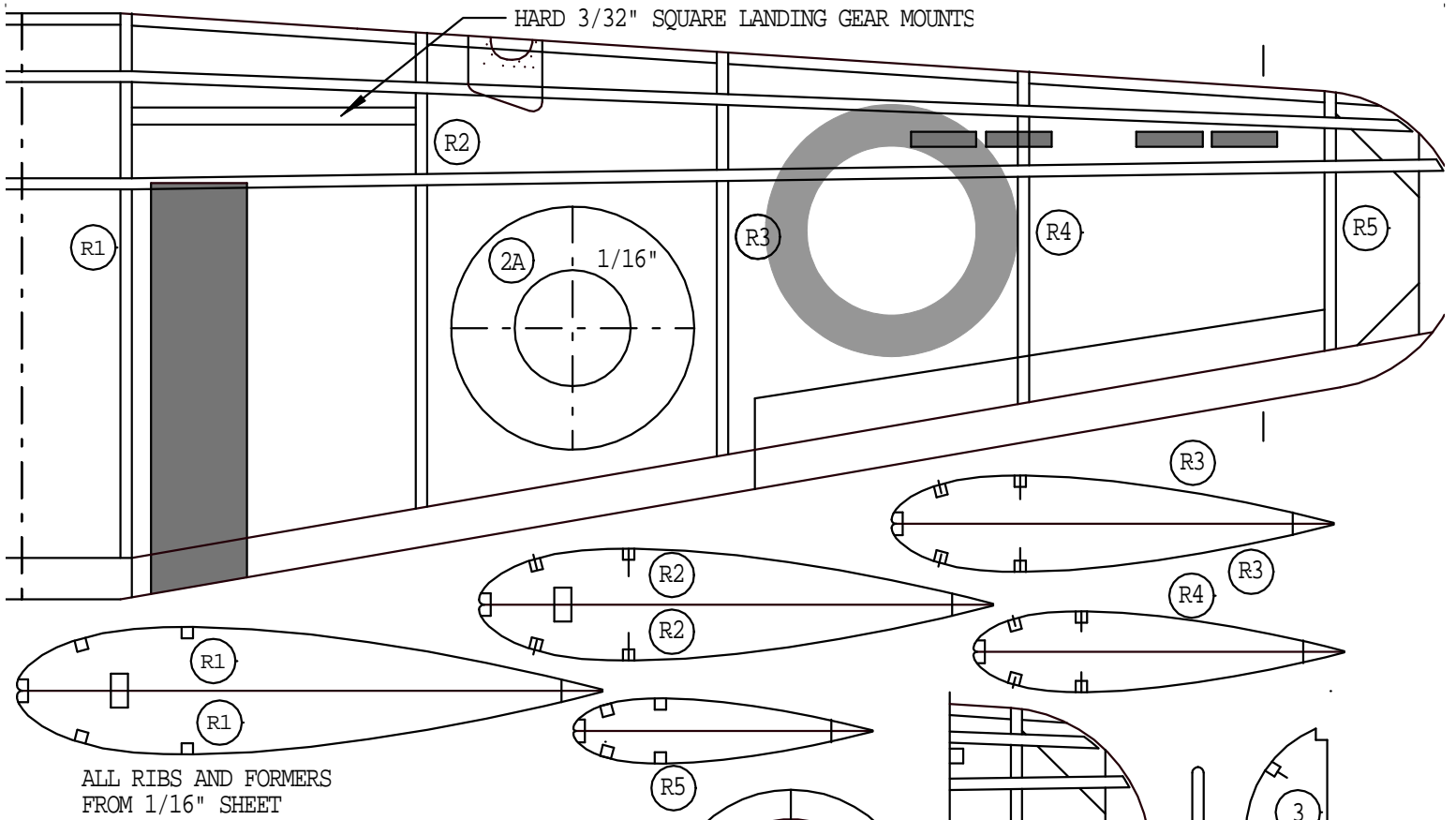
LEADING EDGE AND WING SPARS FROM 1/16" SQUARE



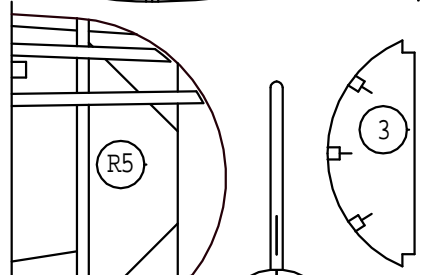
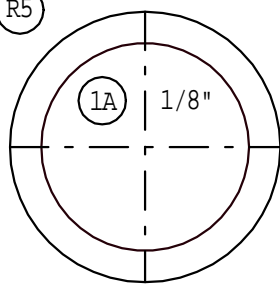
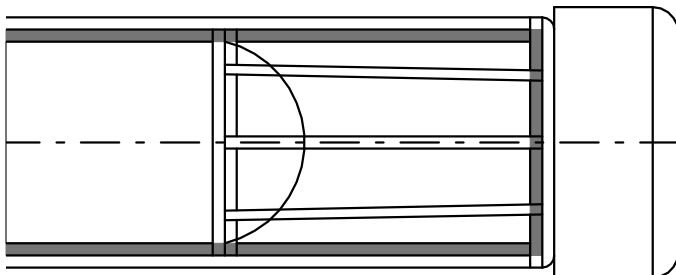
THE CA-6 WAS THE PRODUCTION VERSION OF THE WACKETT TRAINER, DEVELOPED BY COMMONWEALTH AIRCRAFT CORPORATION IN MELBOURNE, AUSTRALIA JUST PRIOR TO WWII. THE WACKETT PROTOTYPES ORIGINALLY FLEW WITH DE HAVILLAND GYPSY ENGINES, BUT THEY WERE LACKING IN POWER, HENCE THE CHANGE TO THE WARNER SCARAB RADIAL ENGINE. THE RAAF ORDERED 200 CA-6 WACKETTS, GIVING THE WACKETT THE DISTINCTION OF THE LARGEST PRODUCTION RUN OF ANY AUSTRALIAN DESIGNED AIRCRAFT.



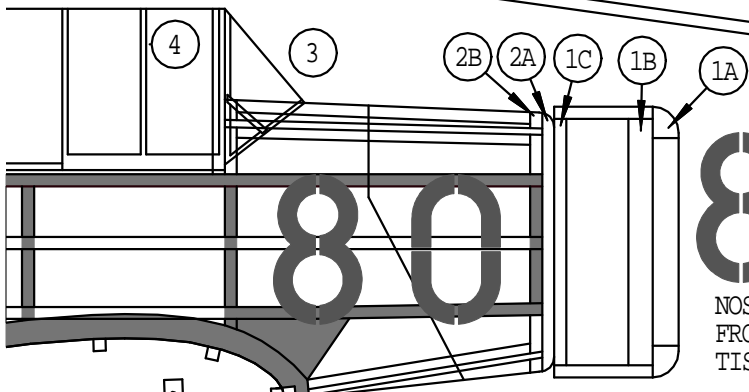
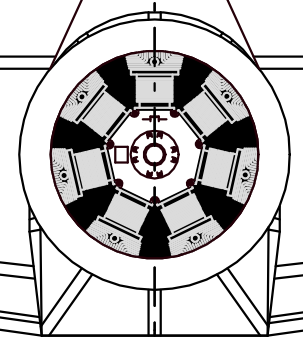
HARD 3/32" SQUARE LANDING GEAR MOUNTS



ALL RIBS AND FORMERS FROM 1/16" SHEET

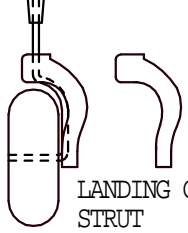


COLOUR NOTES:
 OVERALL TRAINER YELLOW
 BLACK SERIAL NUMBERS
 ON NOSE AND WING UNDERSIDE

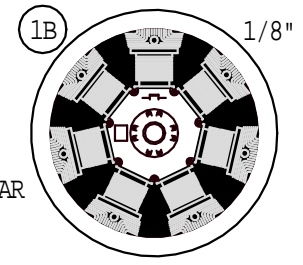


80

NOSE NUMBERS FROM BLACK TISSUE



LANDING GEAR STRUT 1/8" SHEET



BALANCE AT REAR TOP SPAR

WHEELS FROM 1/4" SHEET

CAC CA-6 WACKETT TRAINER

SPAN - 16" AREA - 36.7sq"	LENGTH - 11½"
DRAWING NO. NDS03	SERIES - NEO DIME SCALE
DRAWN & LETTERED BY - DJB	SCALE - 1:27.75