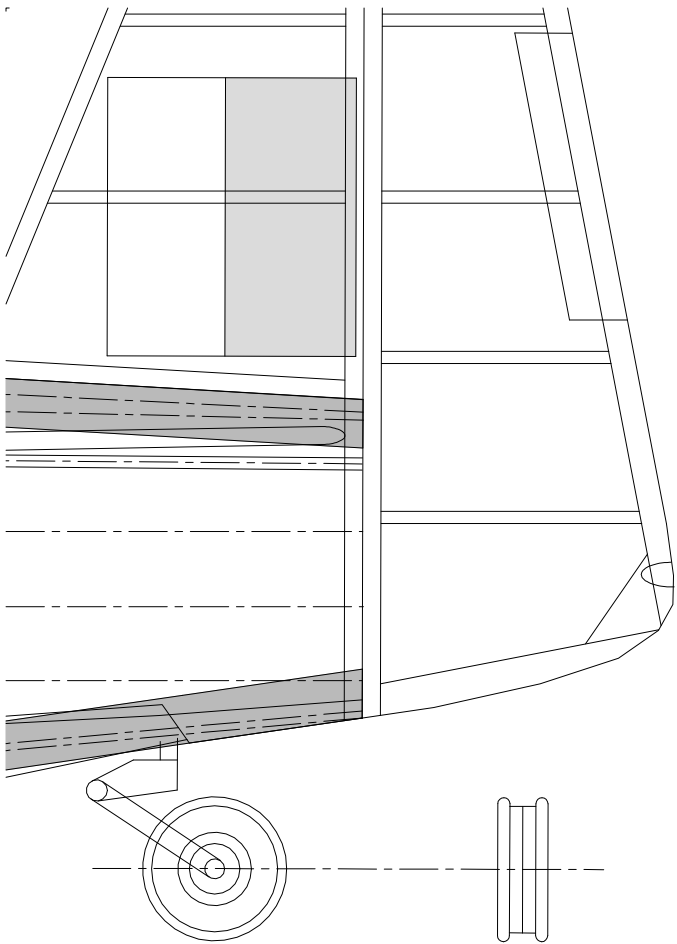


## Commonwealth Aircraft Corporation CA-15

Dimensions:	Prototype:	Model:
Span:	10.97m	610mm (24.0 in)
Length:	11.03m	613mm (24.2 in)
Wing area:	23.5 sq. m	6.17 dm <sup>2</sup> (95.7 in <sup>2</sup> )
T/O Weight:	4,882 kg	g
Scale:		1 : 17.9
Model designed by Derek Buckmaster December 2000		

**DB**  
Design Bureau

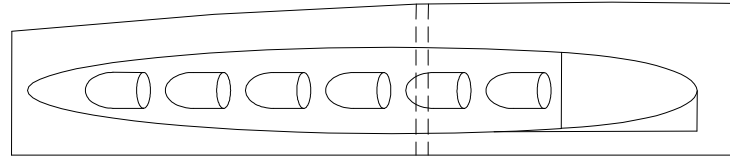
© D Buckmaster 2000



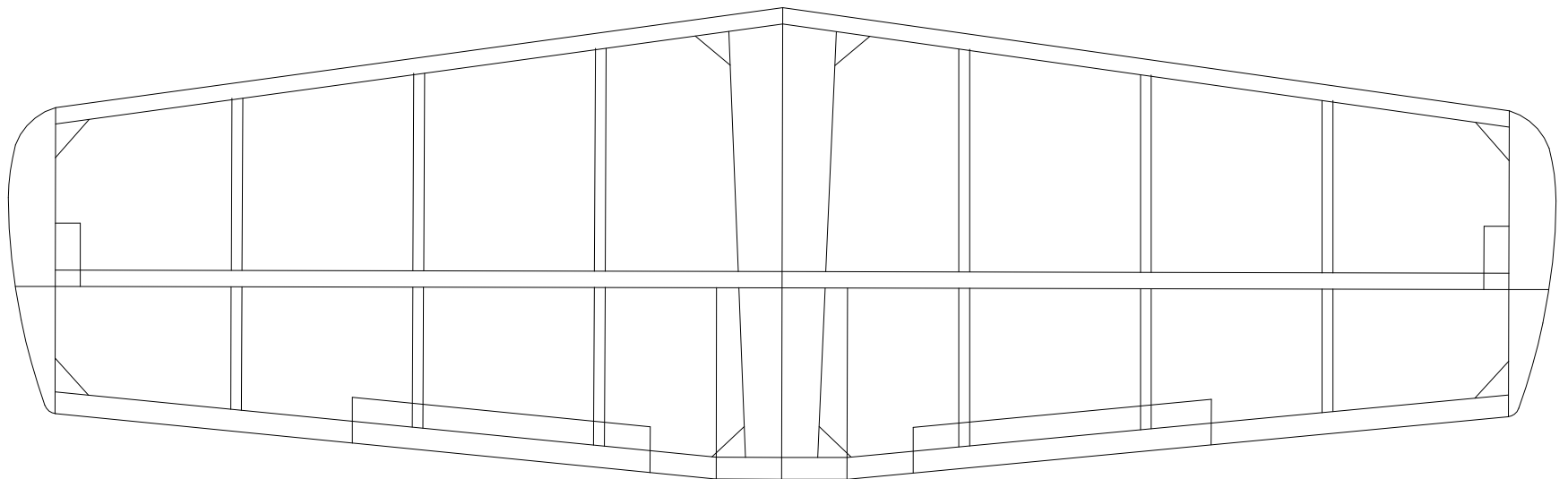
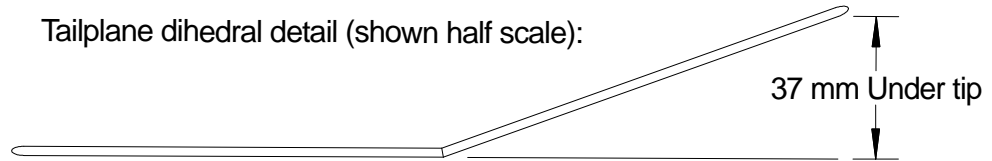
Air scoop fairing wrap-around (fits around AS2)



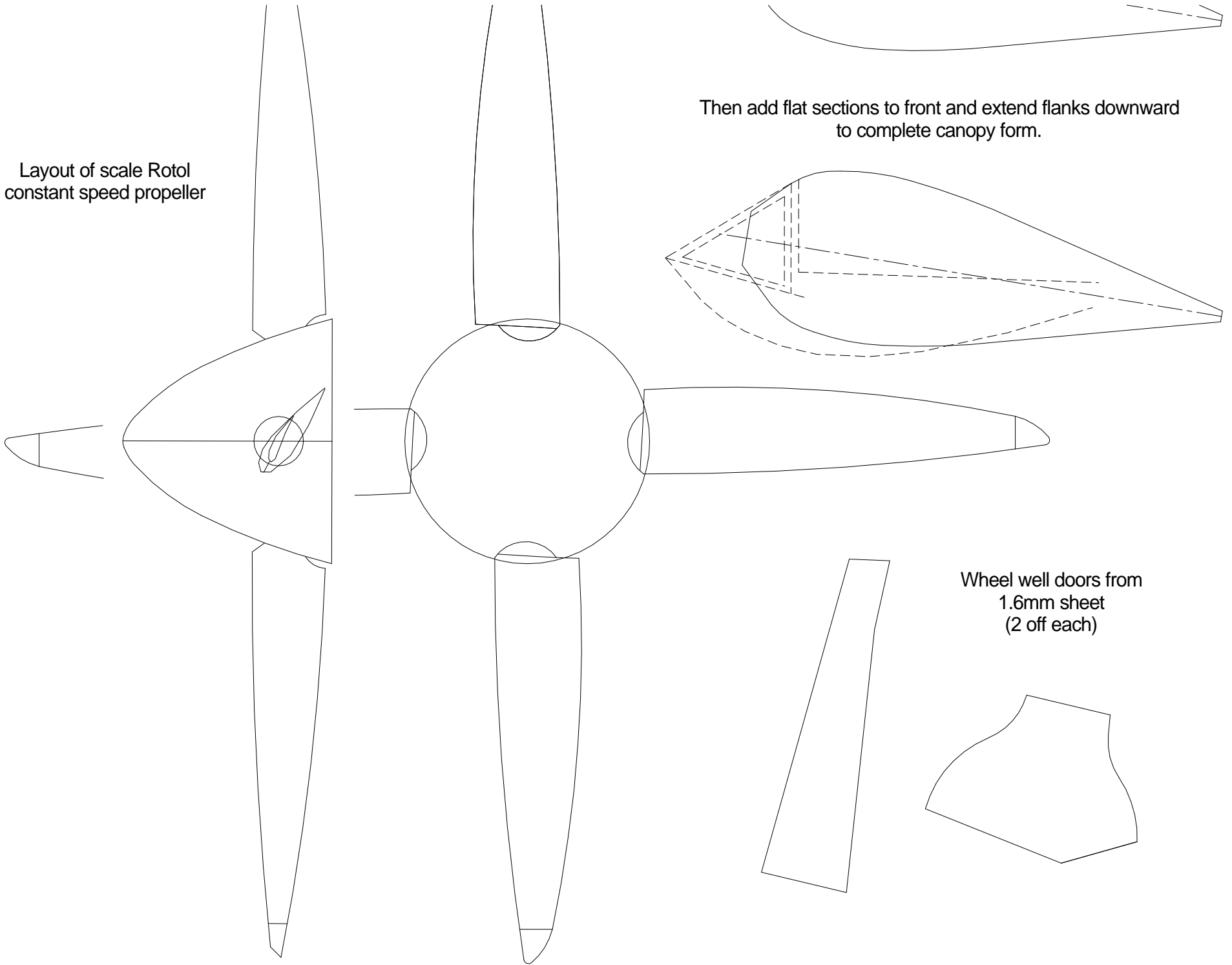
Cut exhaust troughs from 6.4mm sheet and sand to match curve of formers F1C, F2 and F3.



Tailplane dihedral detail (shown half scale):

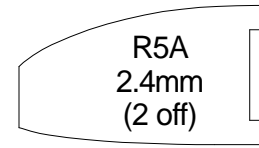
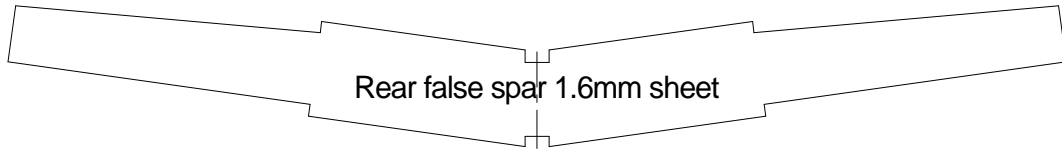


Layout of scale RotoI  
constant speed propeller

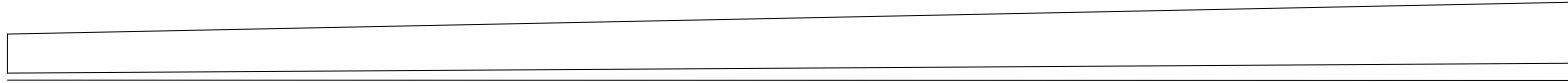


Then add flat sections to front and extend flanks downward  
to complete canopy form.

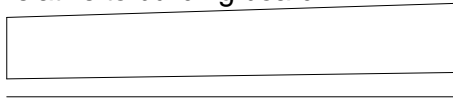
Wheel well doors from  
1.6mm sheet  
(2 off each)



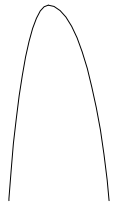
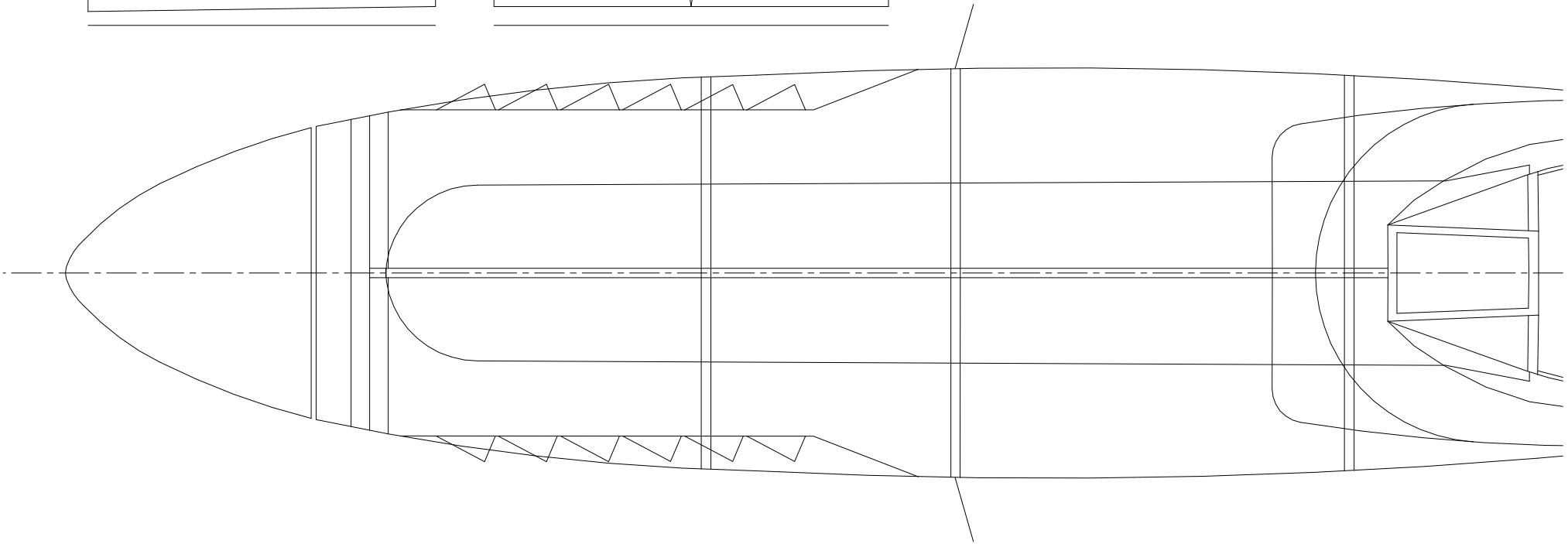
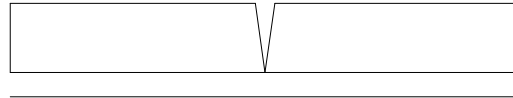
LE3 3.2mm (2 off) Showing position relative to building board



LE2 3.2mm (2 off) Showing position relative to building board

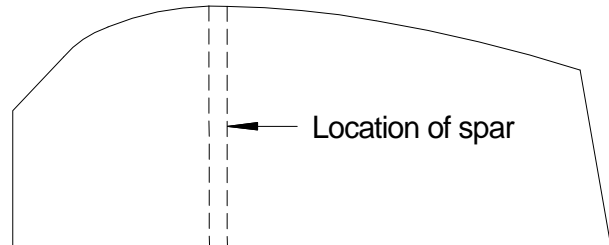
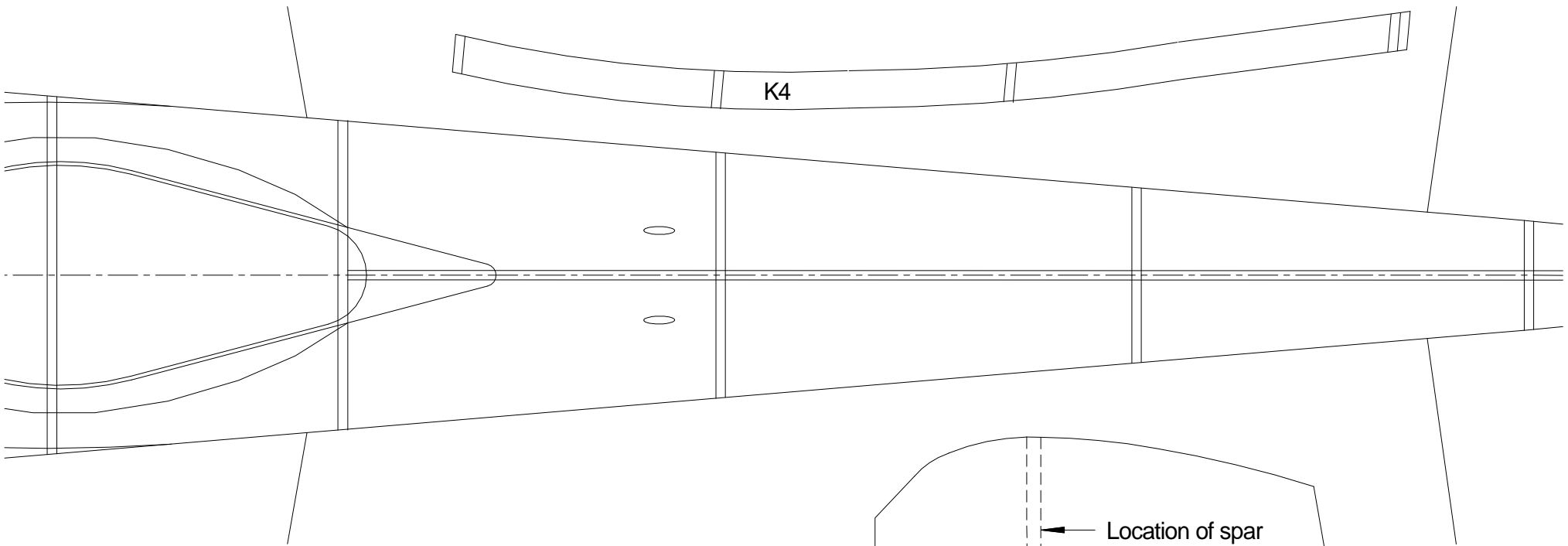
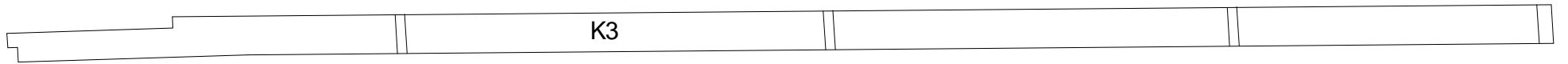
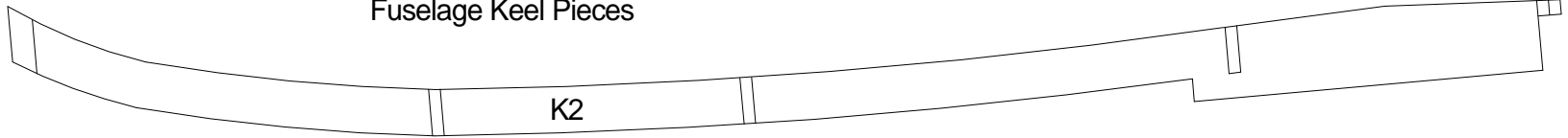


LE1 3.2mm (2 off) Showing position relative to building board

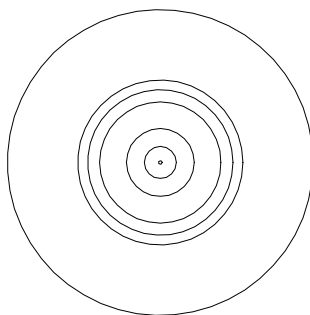
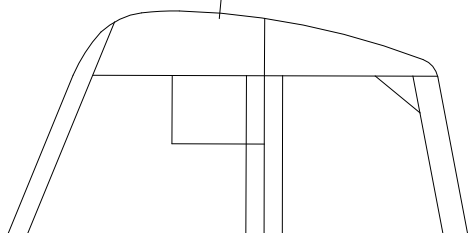
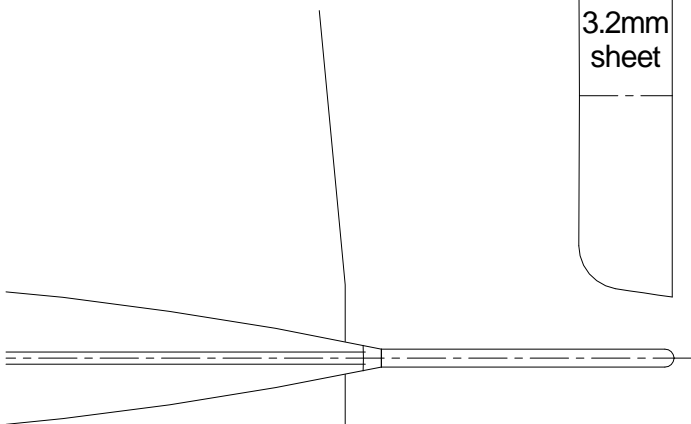
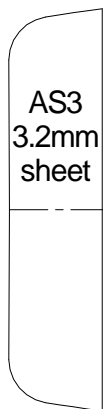
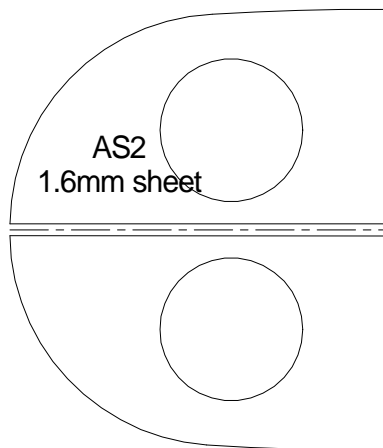
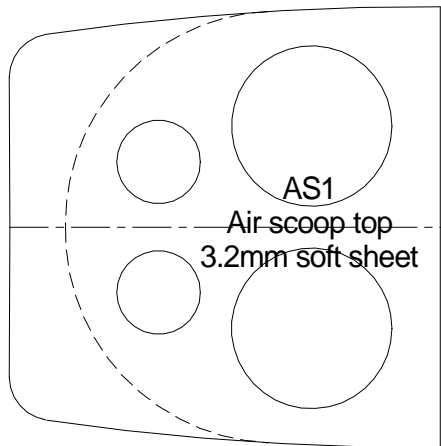




Fuselage Keel Pieces

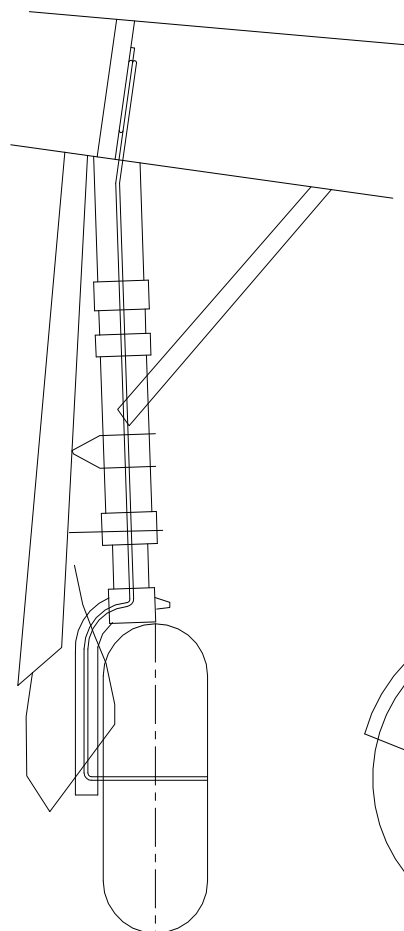


Template for laminating wing tips

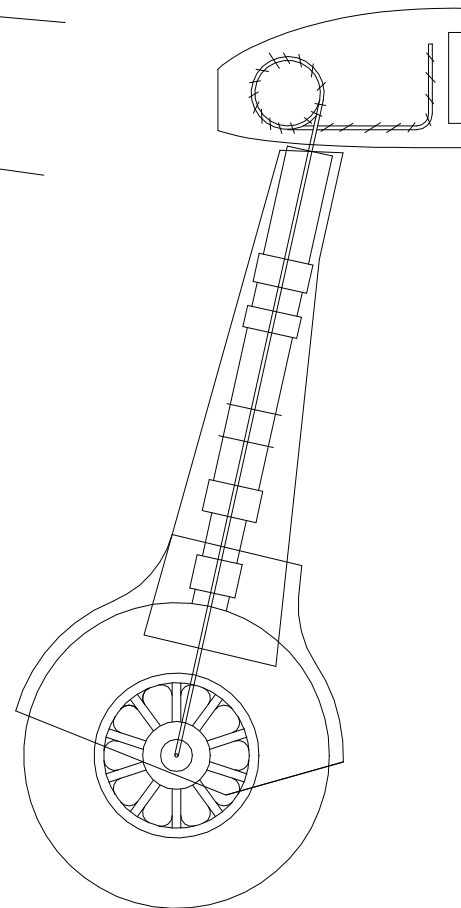


Outboard wheel profile

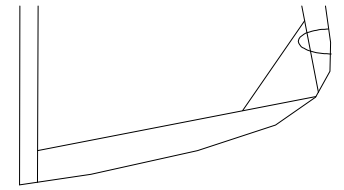
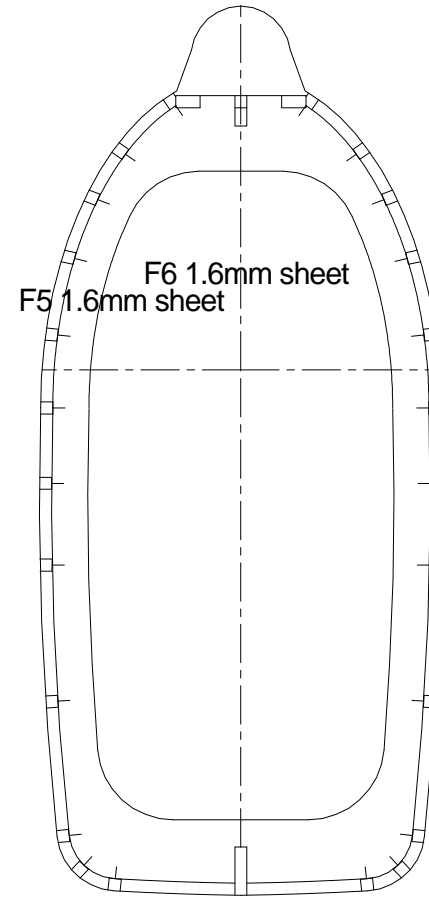
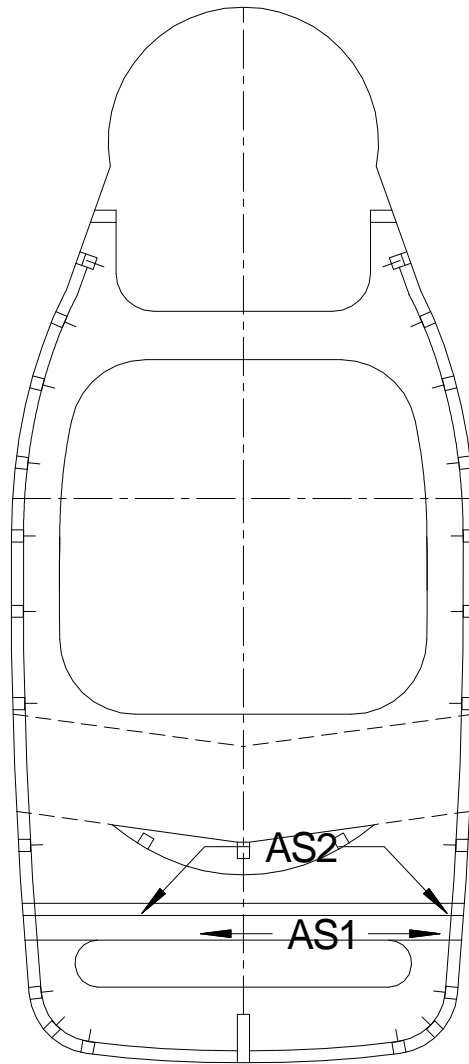
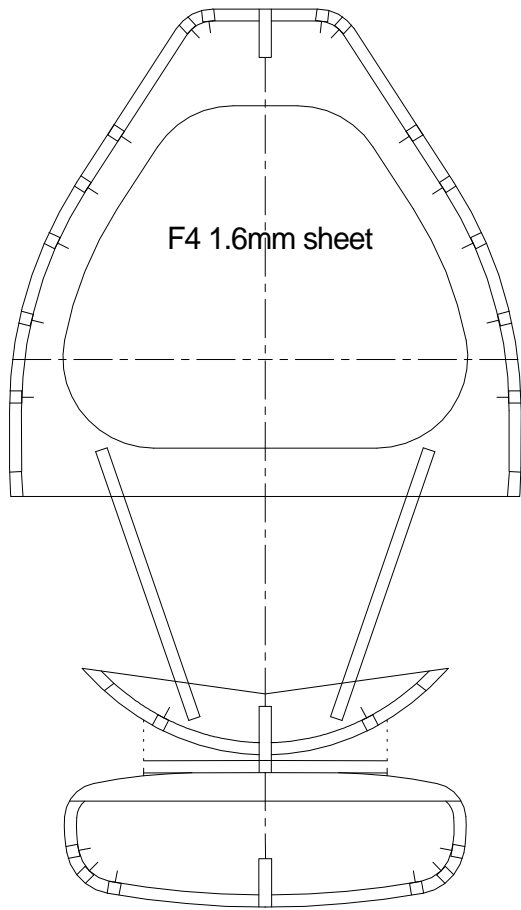
Undercarriage details:



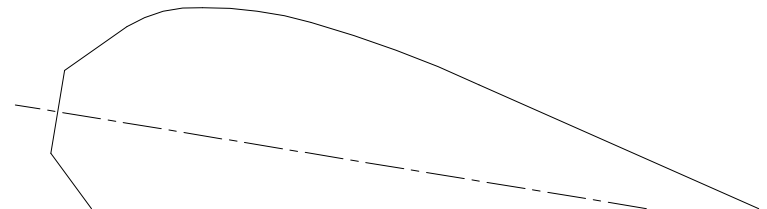
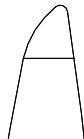
Front view



Inboard profile

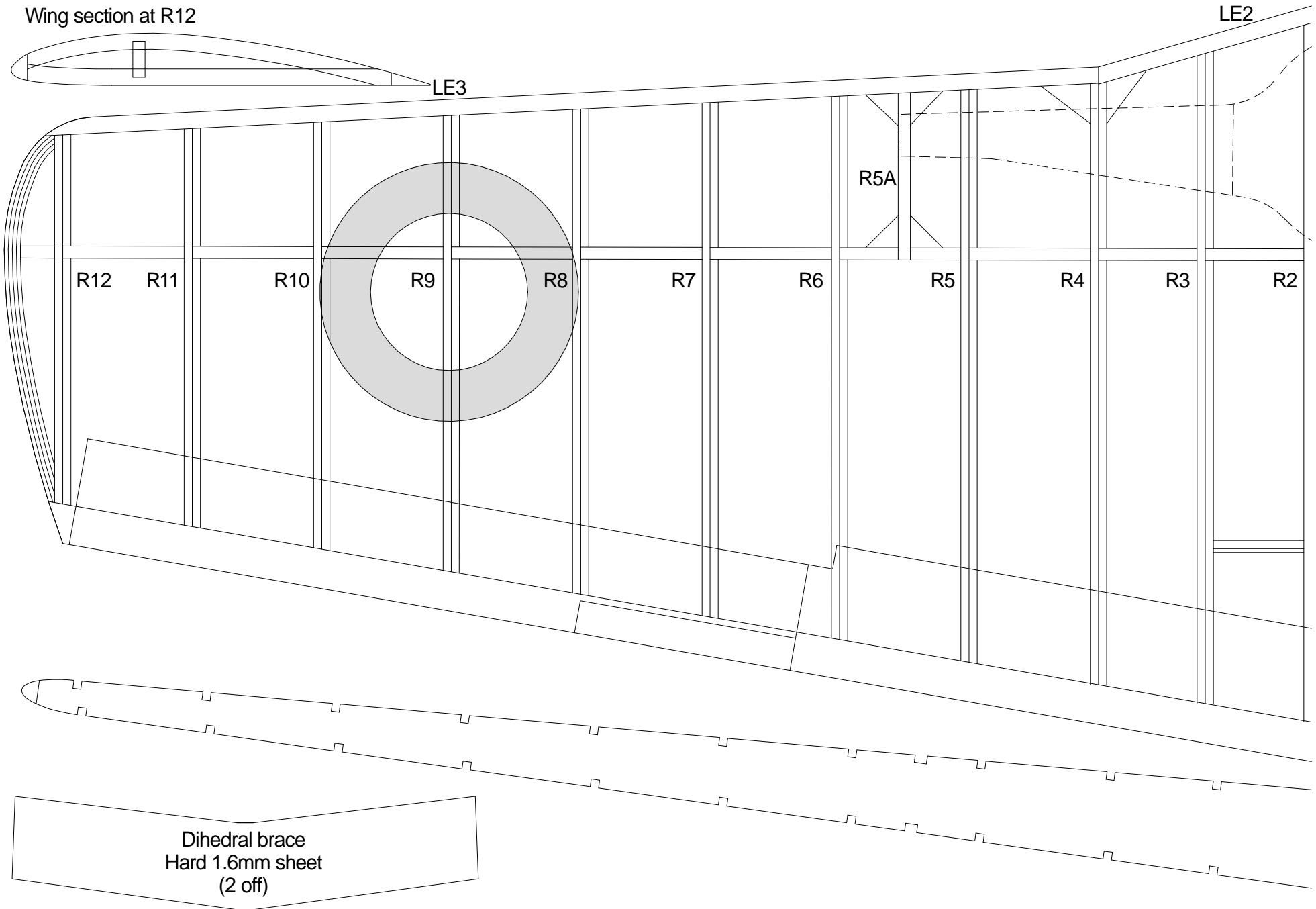


Canopy is thermoformed over a male tool. Canopy cross-section is circular - start making form by turning up this blank using a hand-drill or drill press.

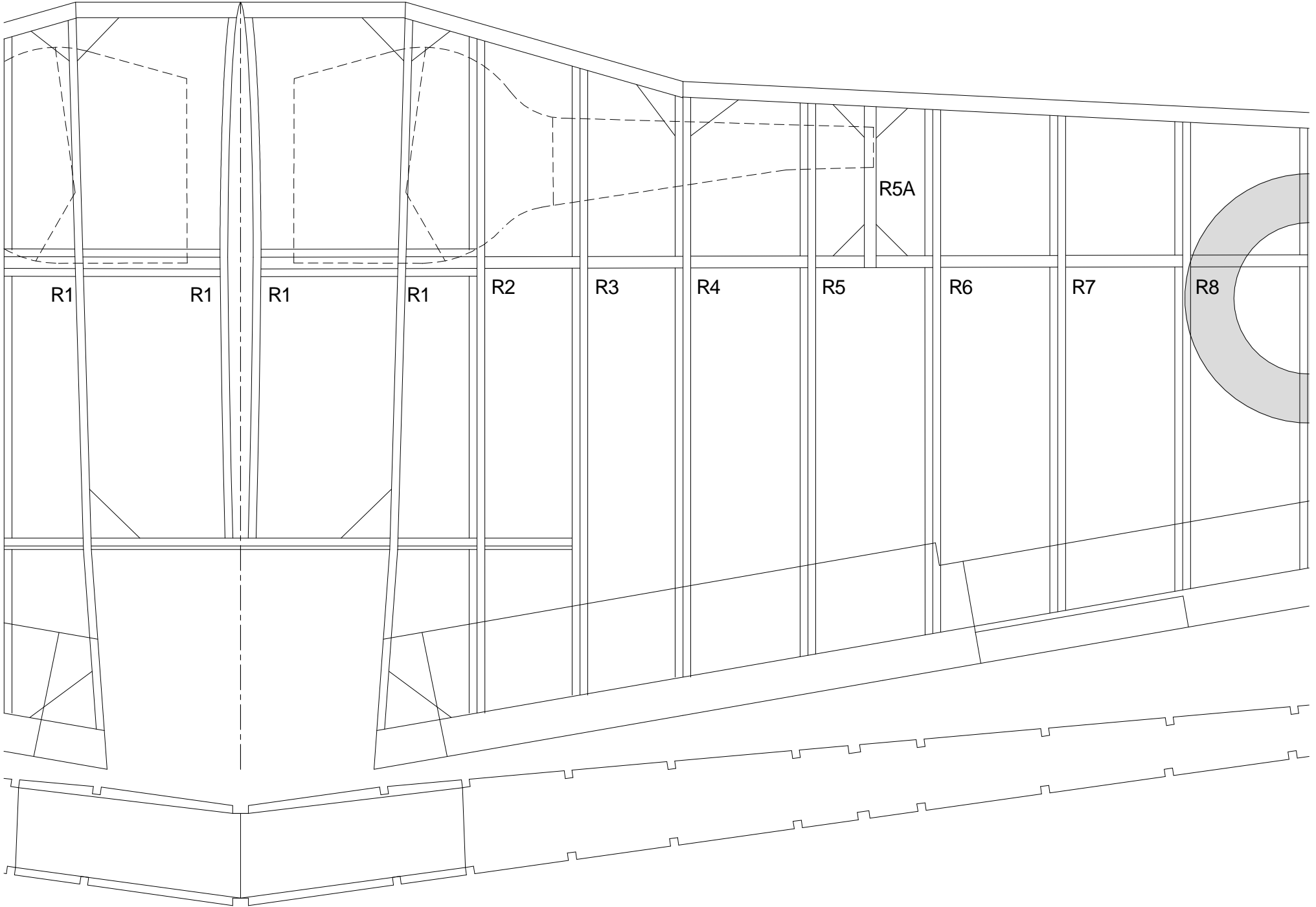




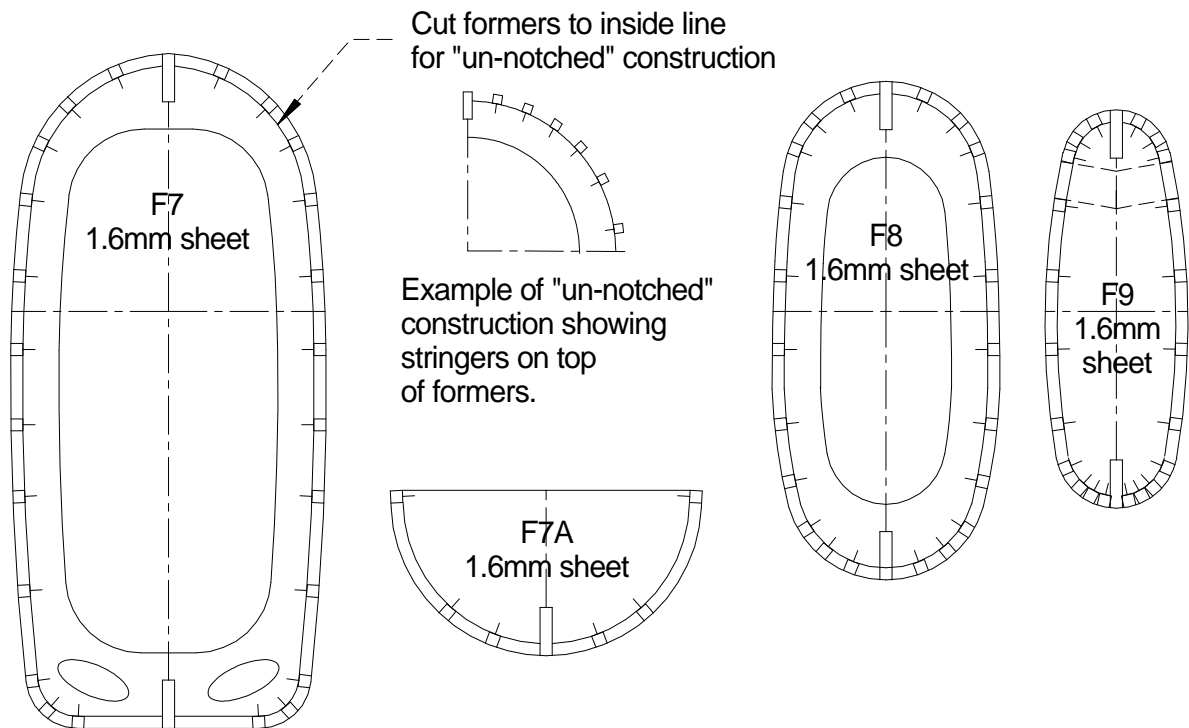
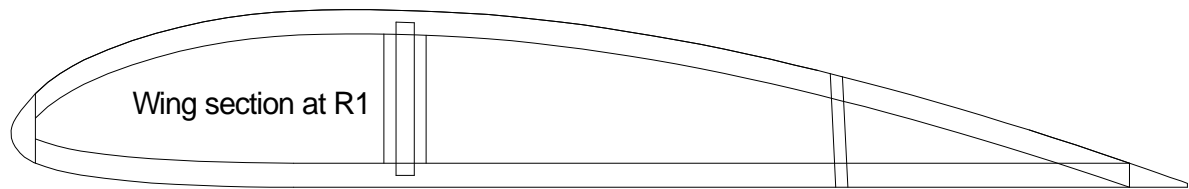
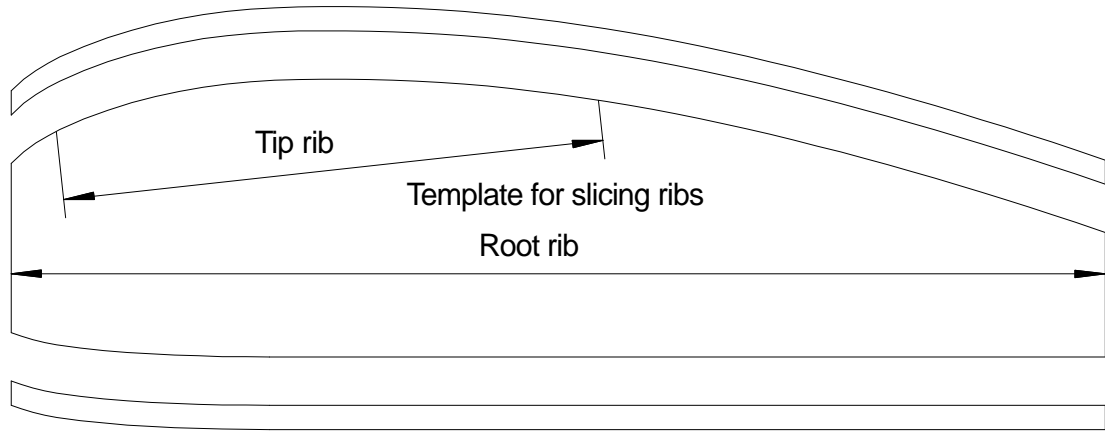
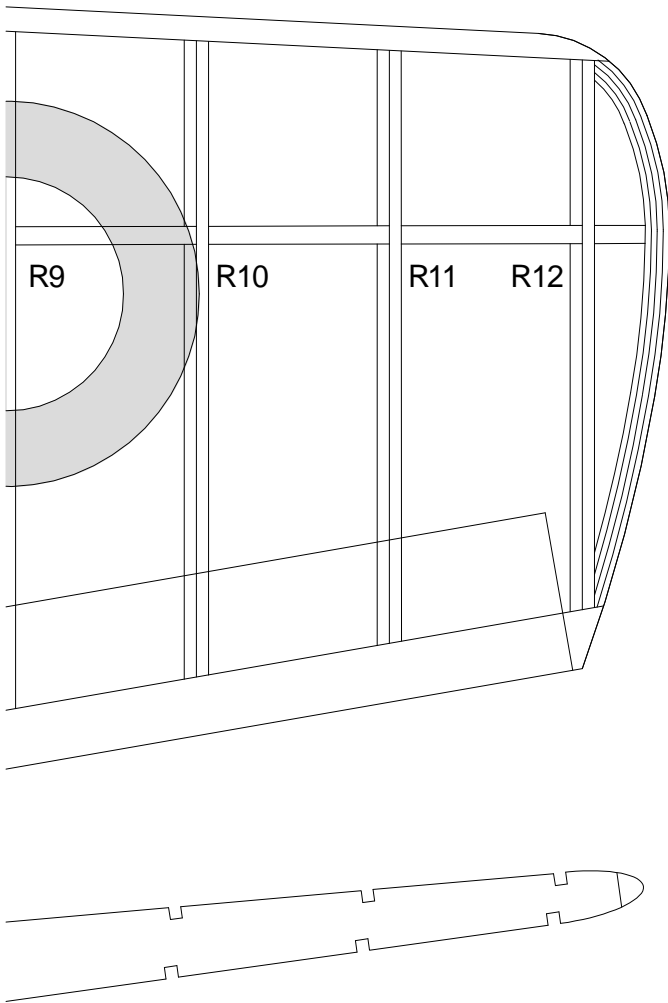
Wing section at R12

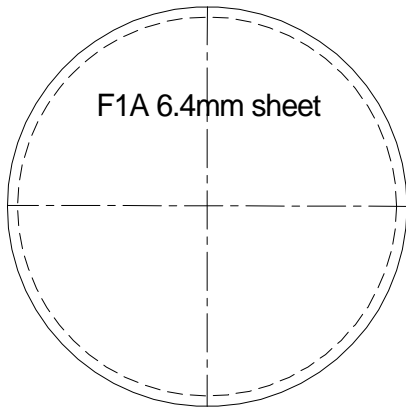


LE1

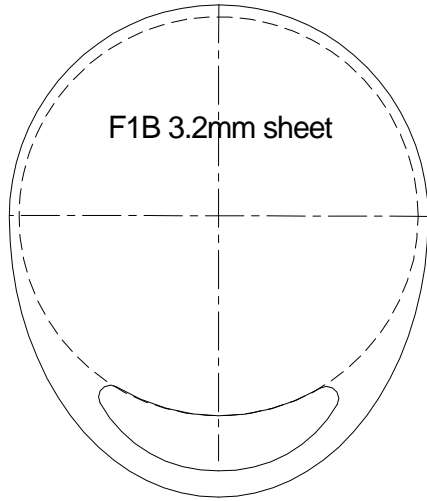


Wing tips from  
4 laminations  
of 0.8 x 3.2mm  
balsa

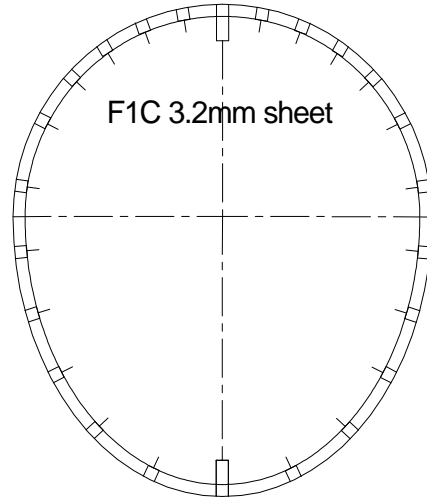




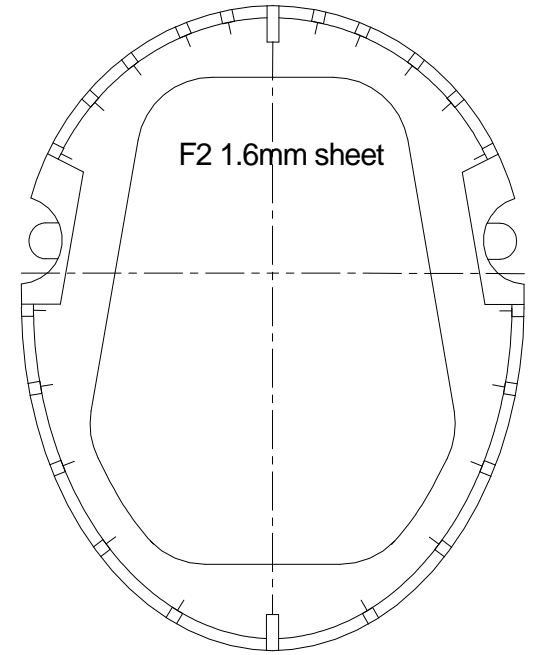
F1A 6.4mm sheet



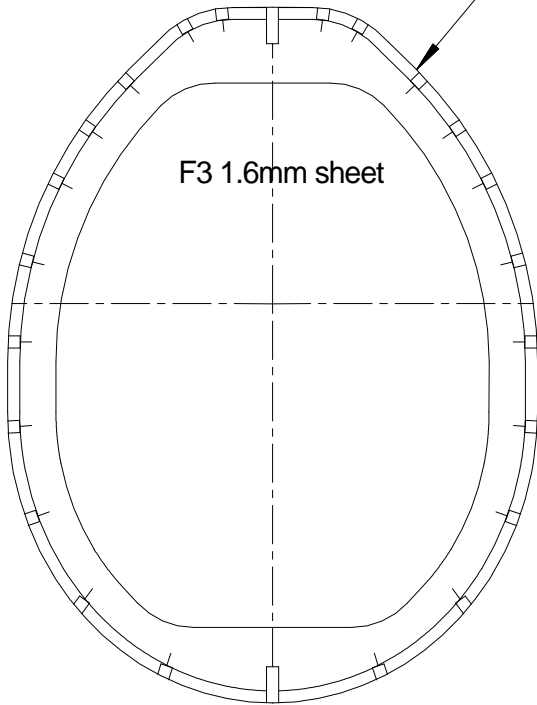
F1B 3.2mm sheet



F1C 3.2mm sheet

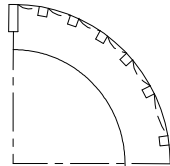


F2 1.6mm sheet



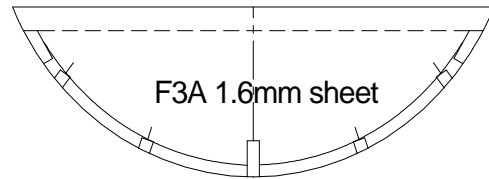
F3 1.6mm sheet

Cut formers to the outside line for "notched" construction



Example of "notched" construction showing stringers set into formers.

Former can be "scalloped" between stringers once glue has dried (to prevent the "starved horse" look).



F3A 1.6mm sheet

