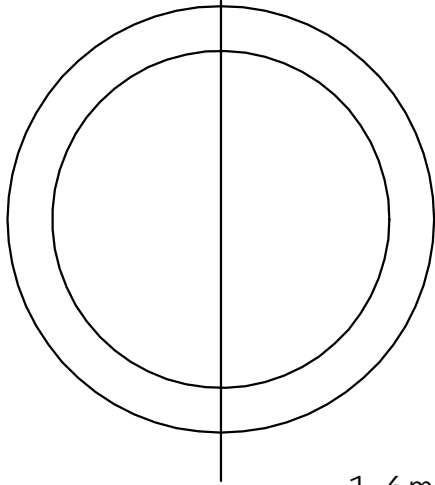
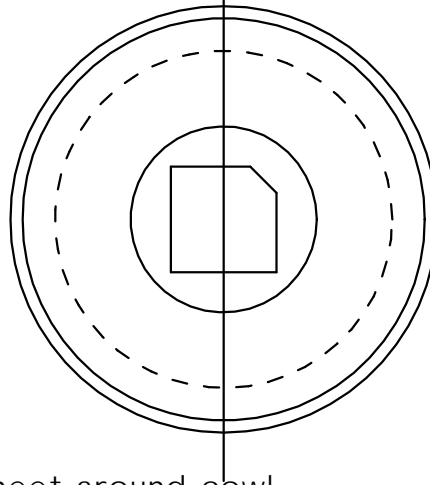


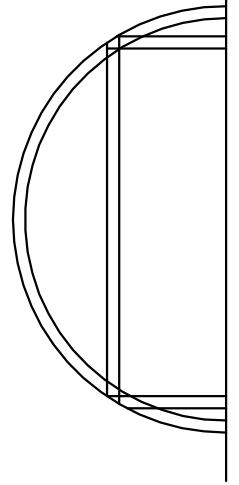
F1 A, B & C
3.2mm



F1D
1.6mm



F2
1.6mm



1.6mm sheet around cowl

0.8mm sheet

F6

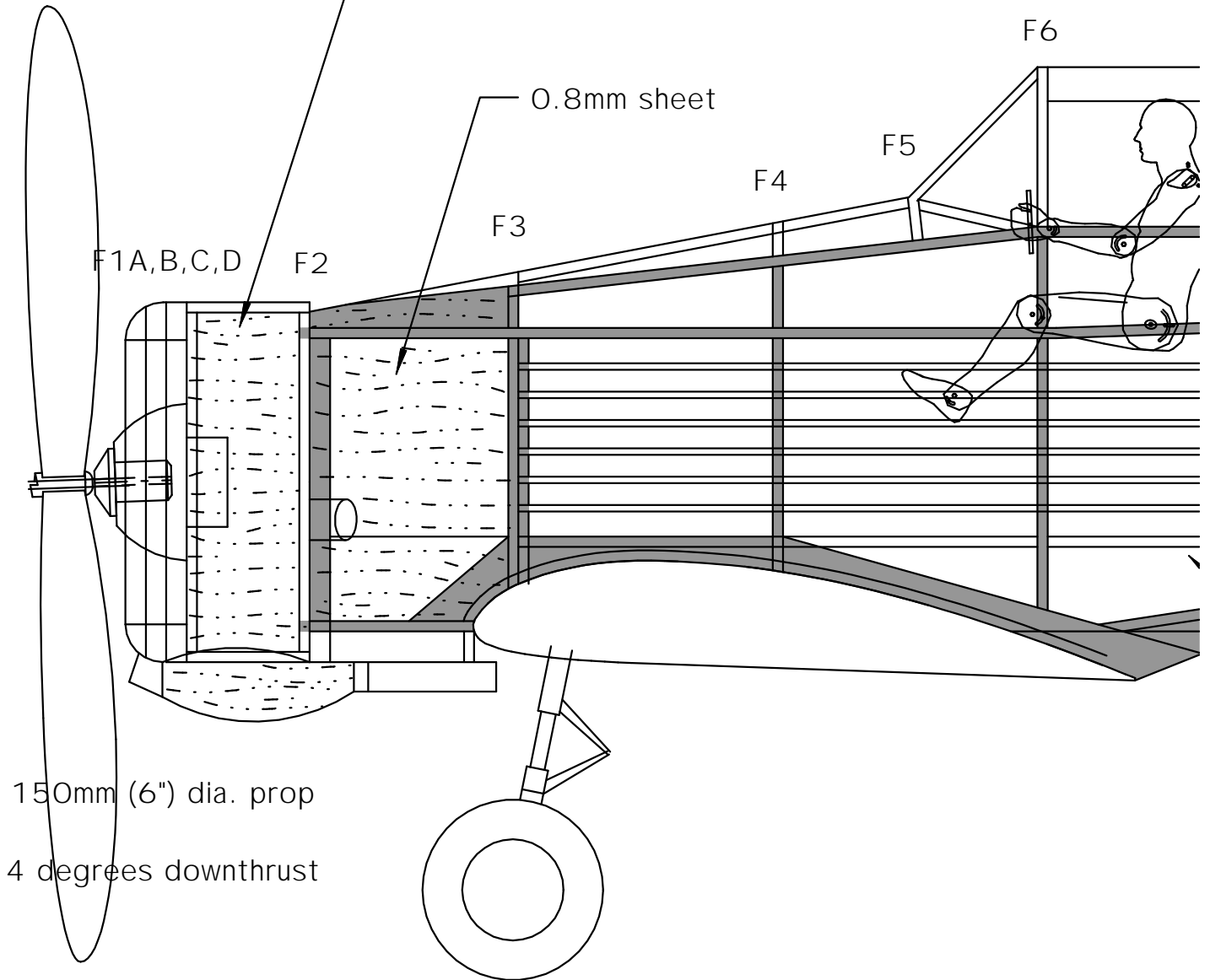
F5

F4

F3

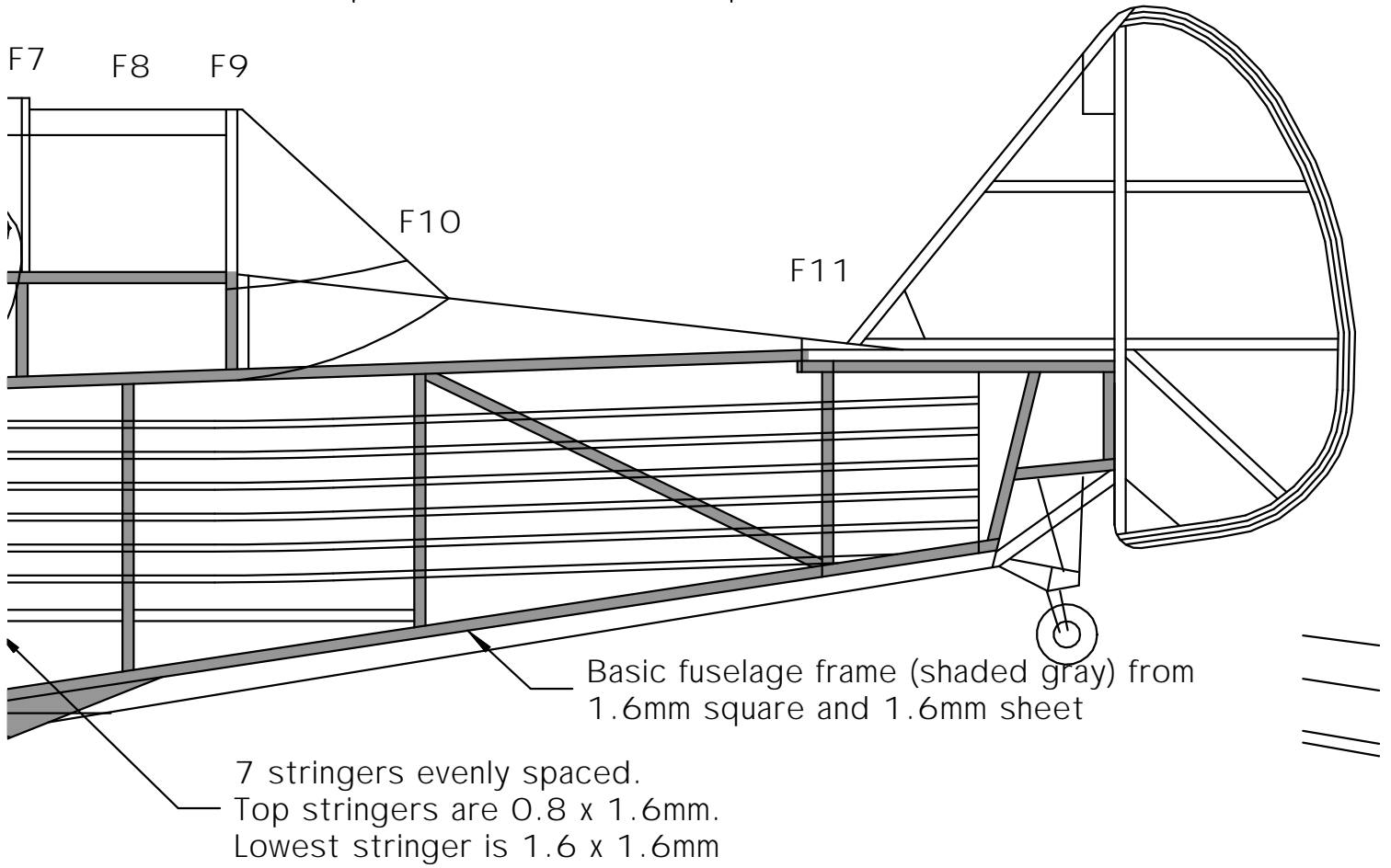
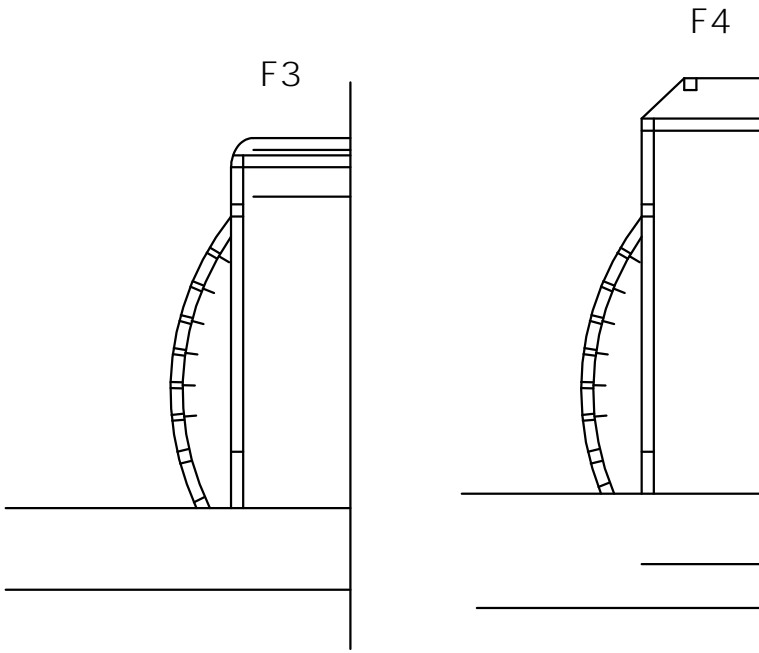
F2

F1A,B,C,D



150mm (6") dia. prop

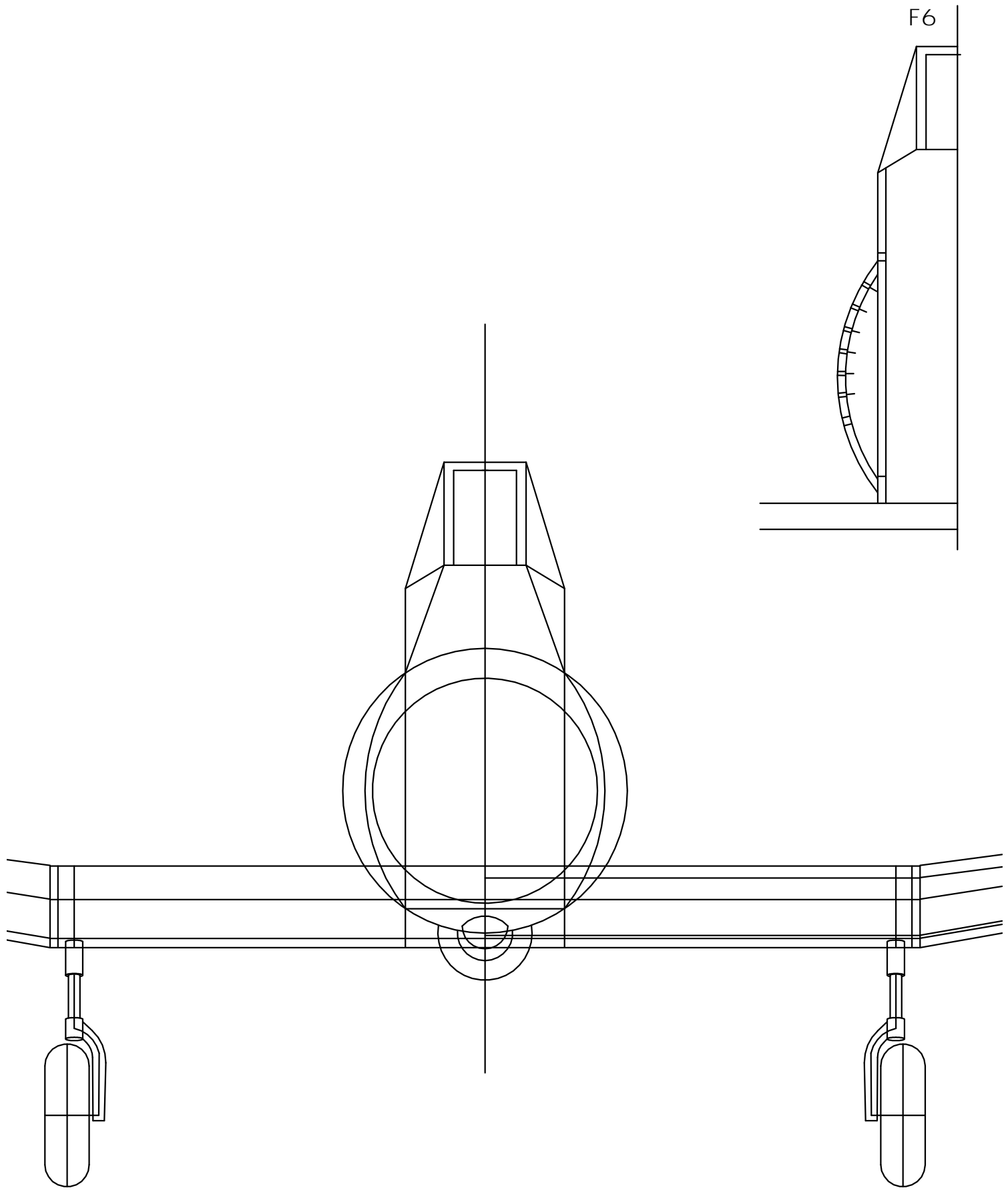
4 degrees downthrust

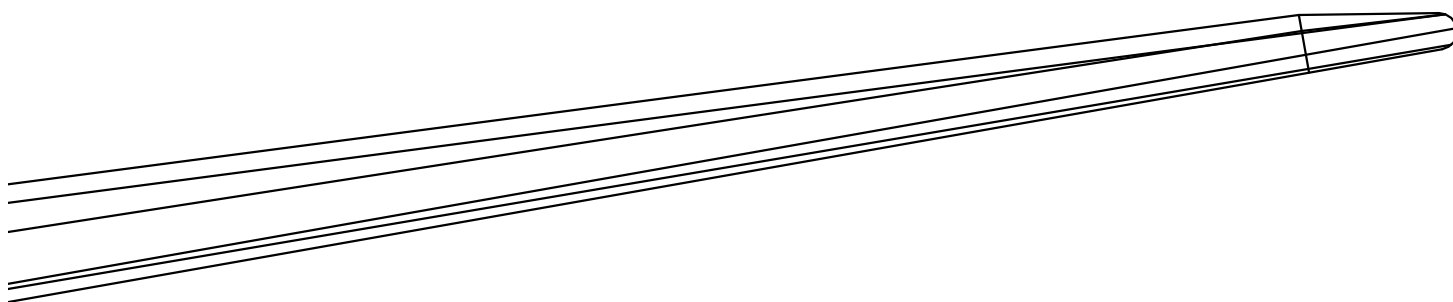
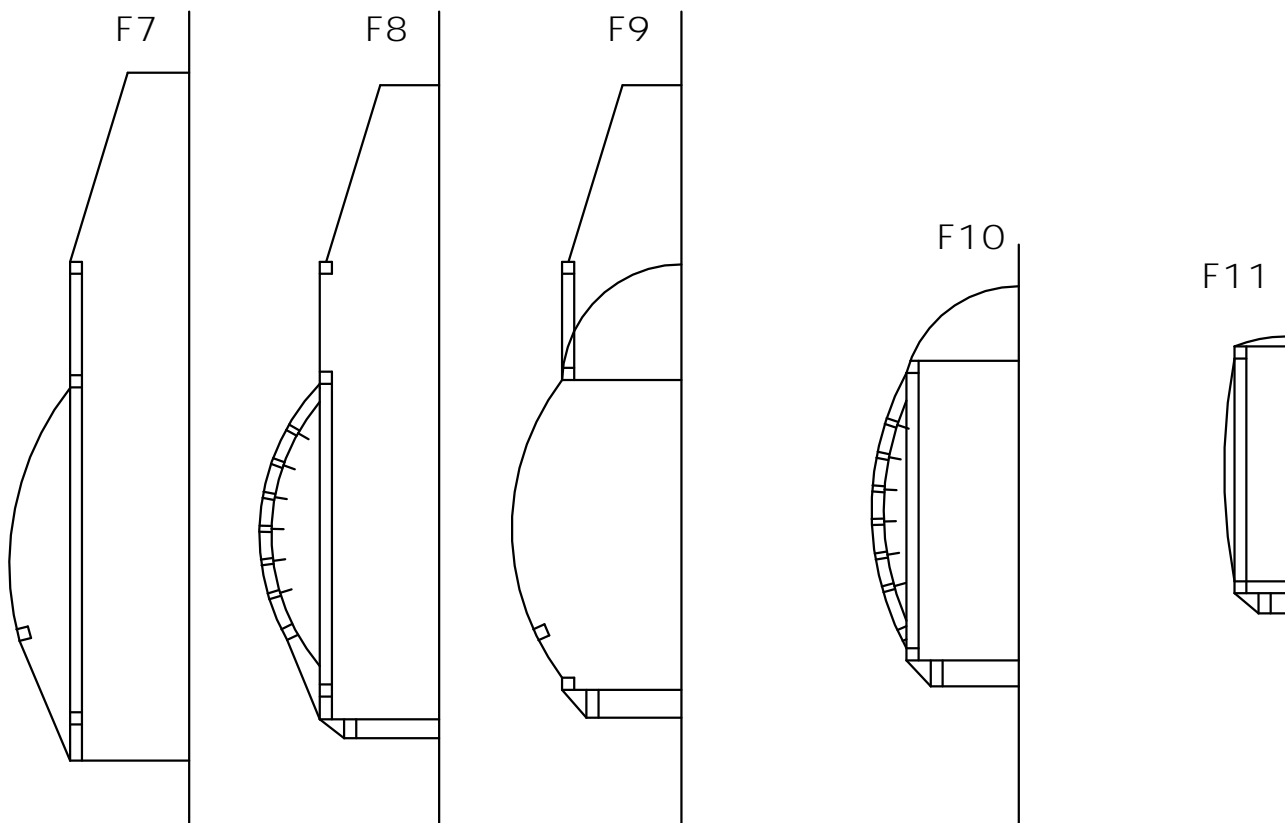


Metric conversions:

0.8mm	1/32"
1.6mm	1/16"
2.4mm	3/32"
3.2mm	1/8"
4.8mm	3/16"
6.4mm	1/4"

F6



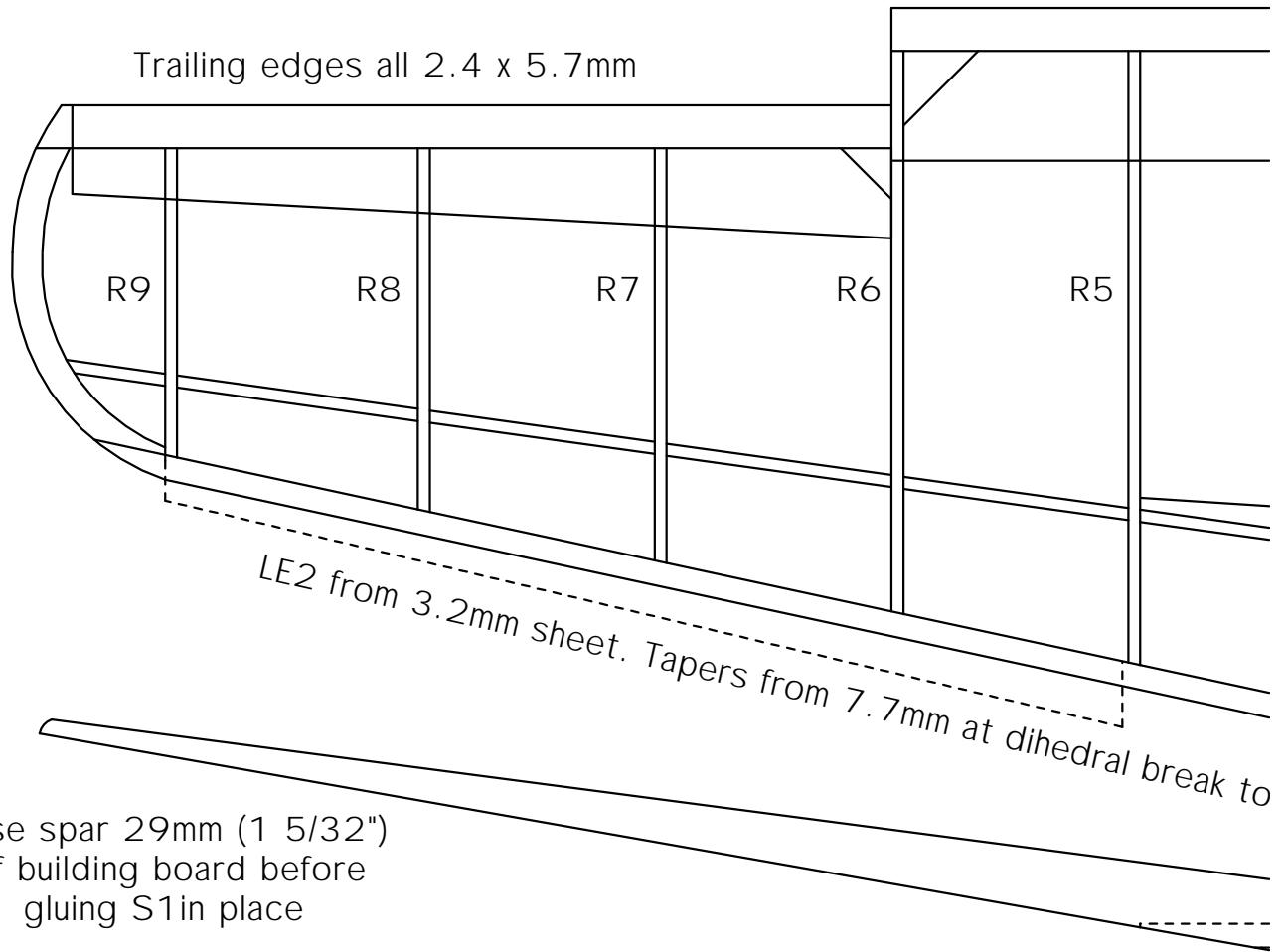


**Commonwealth Aircraft Corporation CA-28 Ceres
A rubber powered flying scale model of a 1960's Australian cropduster**

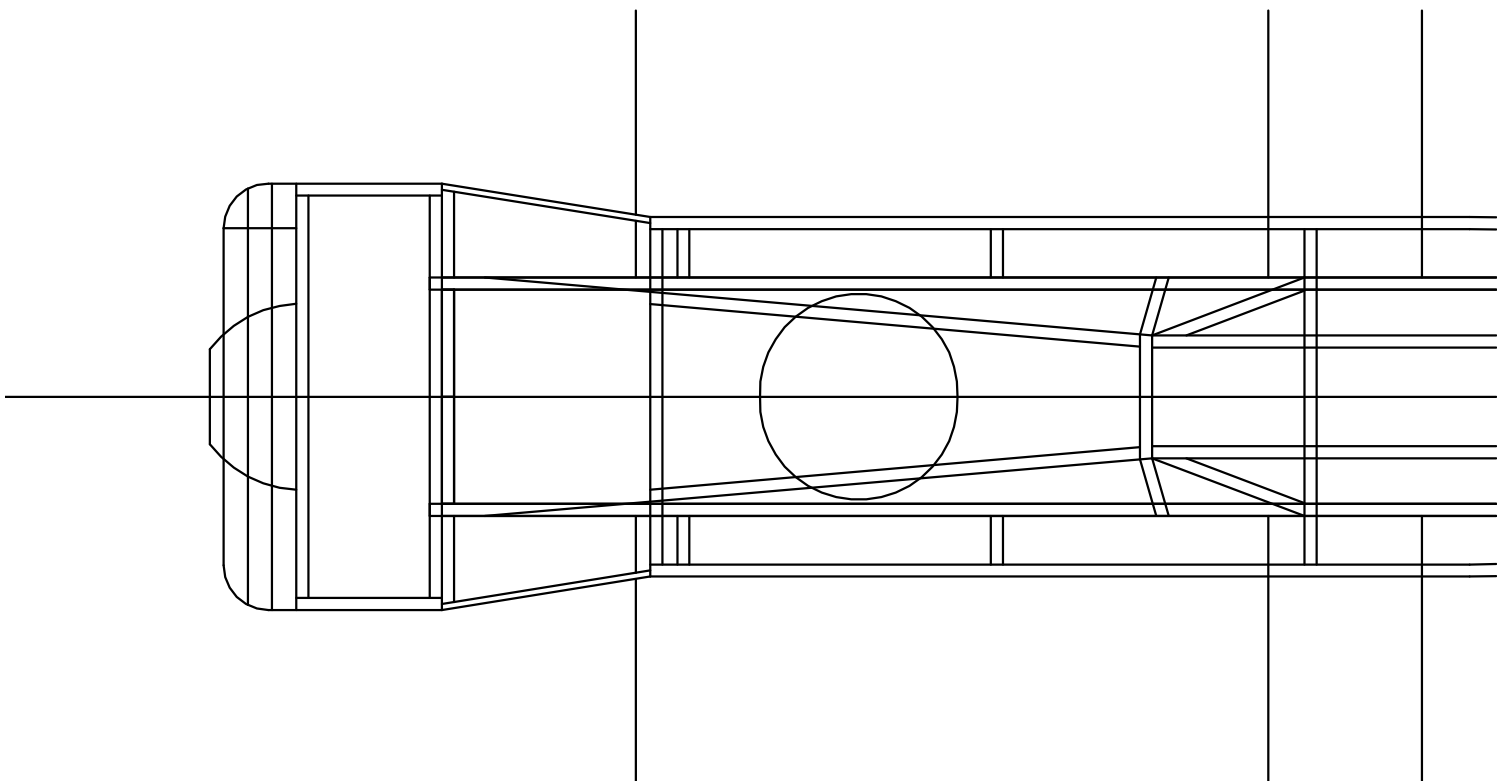
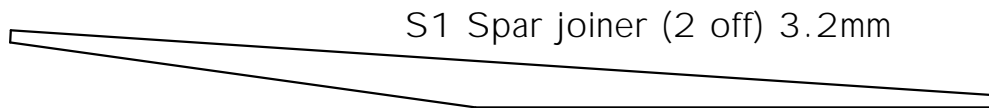
Dimensions:	Prototype:	Model:	
Span:	14.3 m	595 mm	(23.5")
Length:	9.34 m	360 mm	(14.2")
Wing area:	28.99 m ²	4.38 dm ²	(68.2 in ²)
Weight:	3,361 kg	30 g	(1.05 oz)
Wing loading:	23.75 lb/ft ²	6.85 g/dm ²	(2.2 oz/ft ²)
Power:		2 loops	3.2 x 300 mm
Scale:		1 : 24	
Model designed by Derek Buckmaster December 2001			

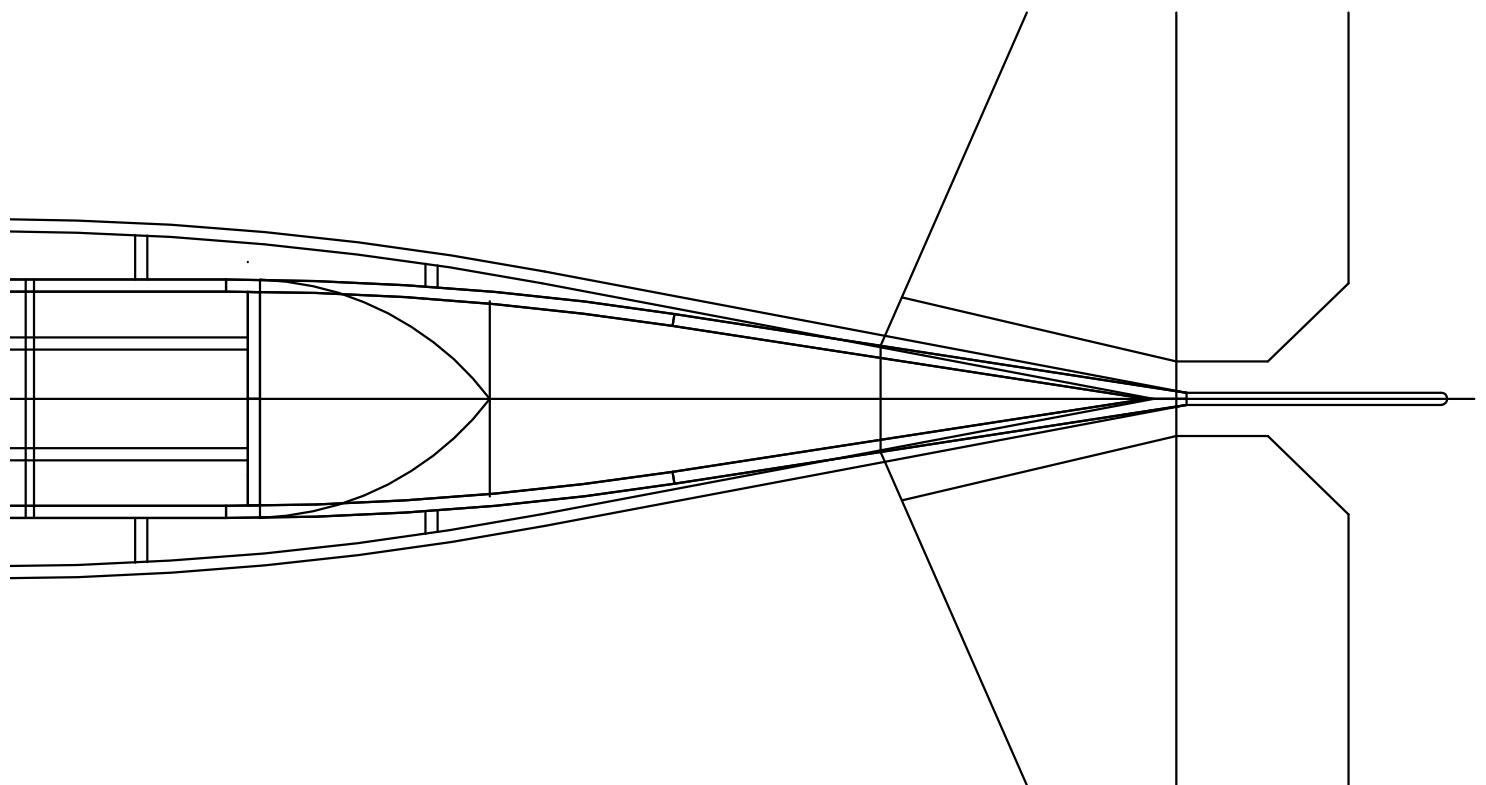
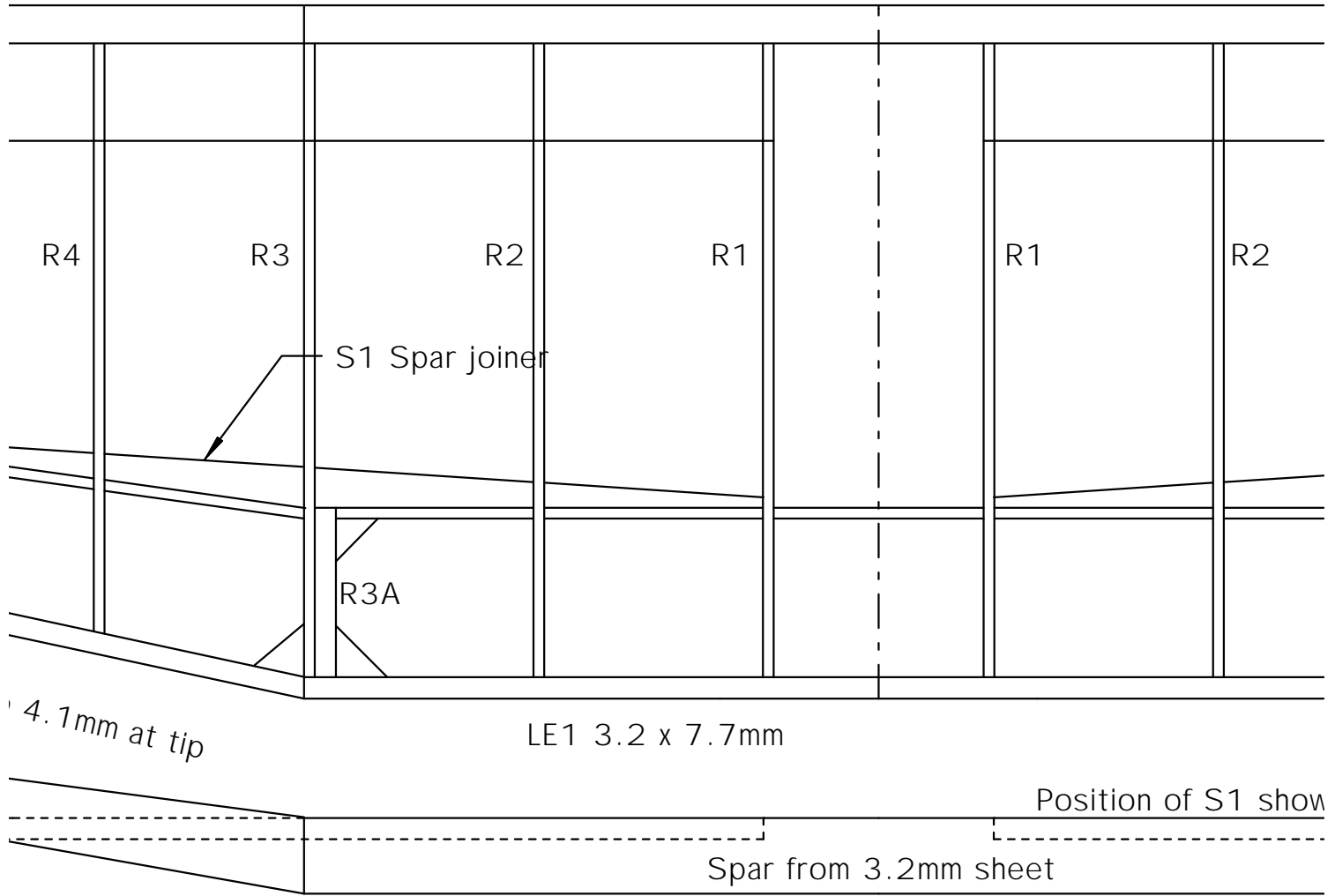


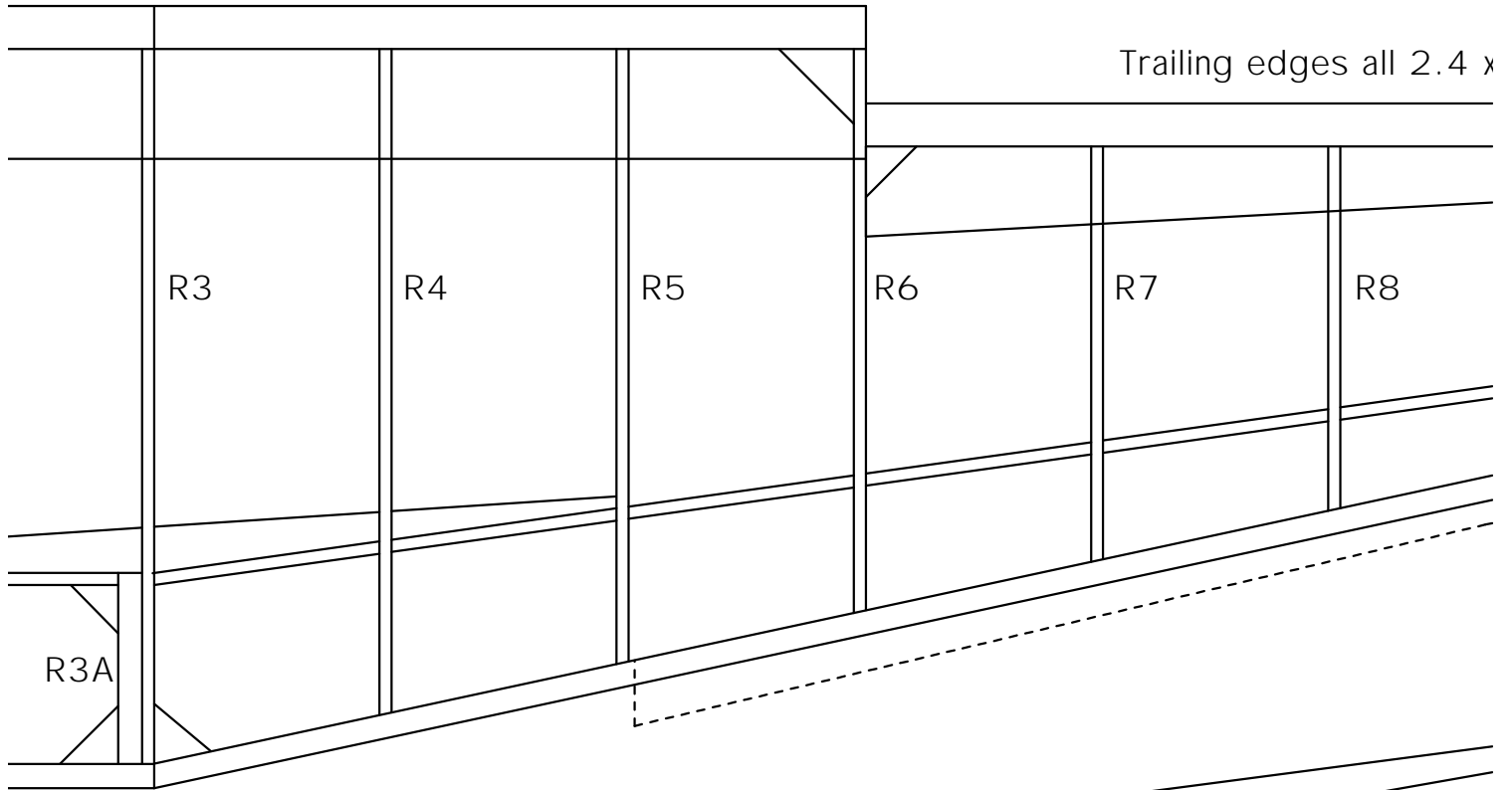
© D Buckmaster
2001



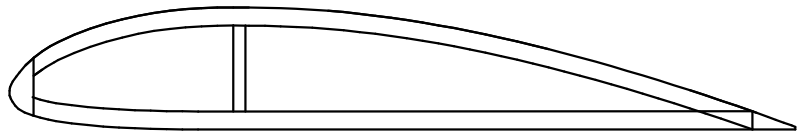
Raise spar 29mm (1 5/32")
off building board before
gluing S1 in place







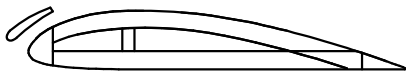
in dotted



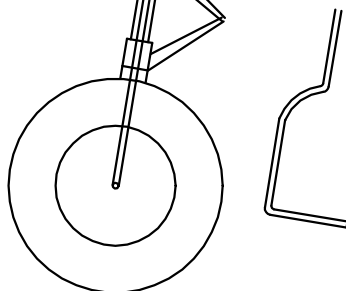
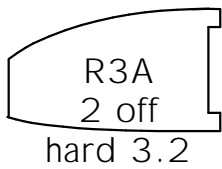
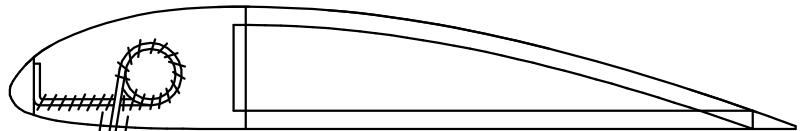
Wing section at R1



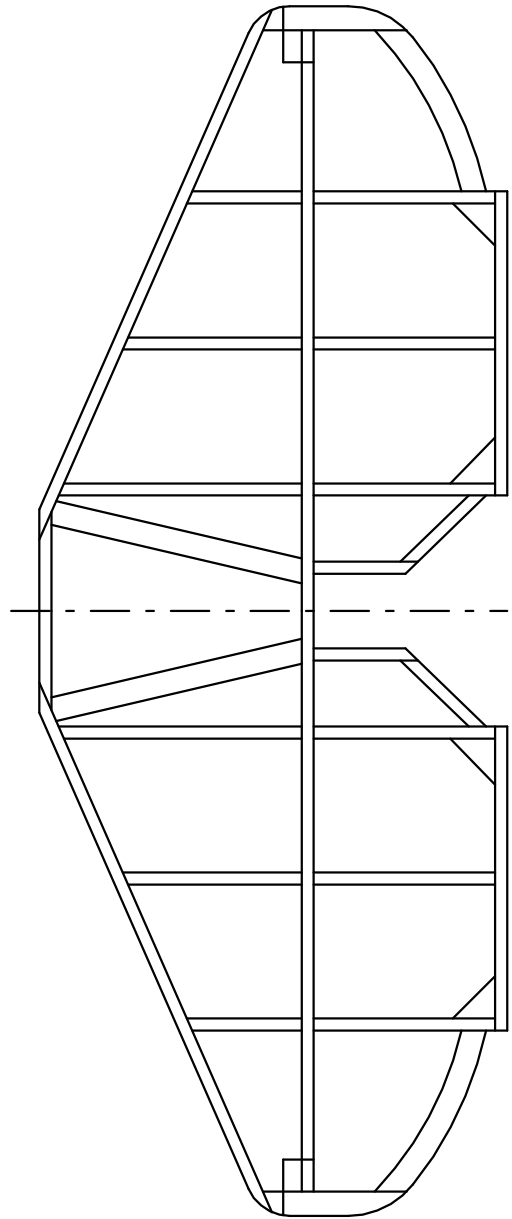
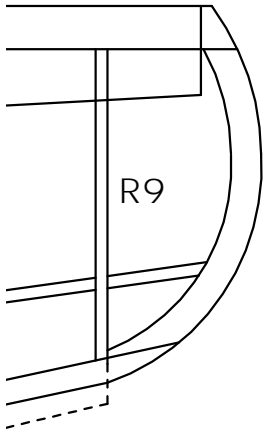
Wing section at R6



Wing section at R9



5.7mm



Tail plane from 1.6mm square
and 1.6mm sheet

Leading edge slats from 2.4mm sheet (2 off)

