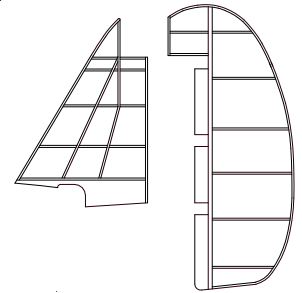
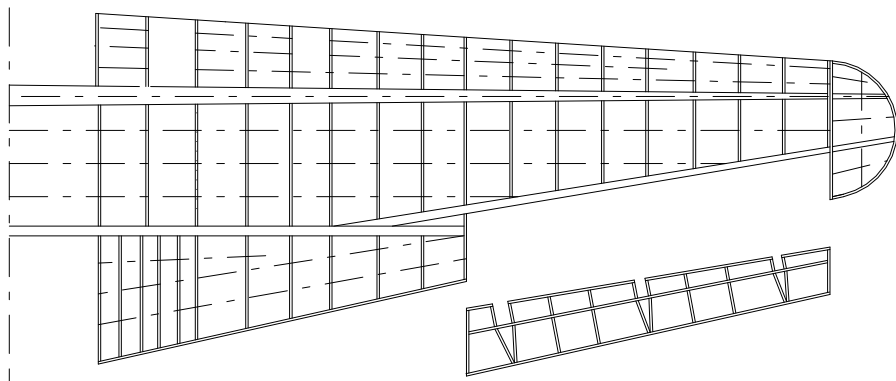


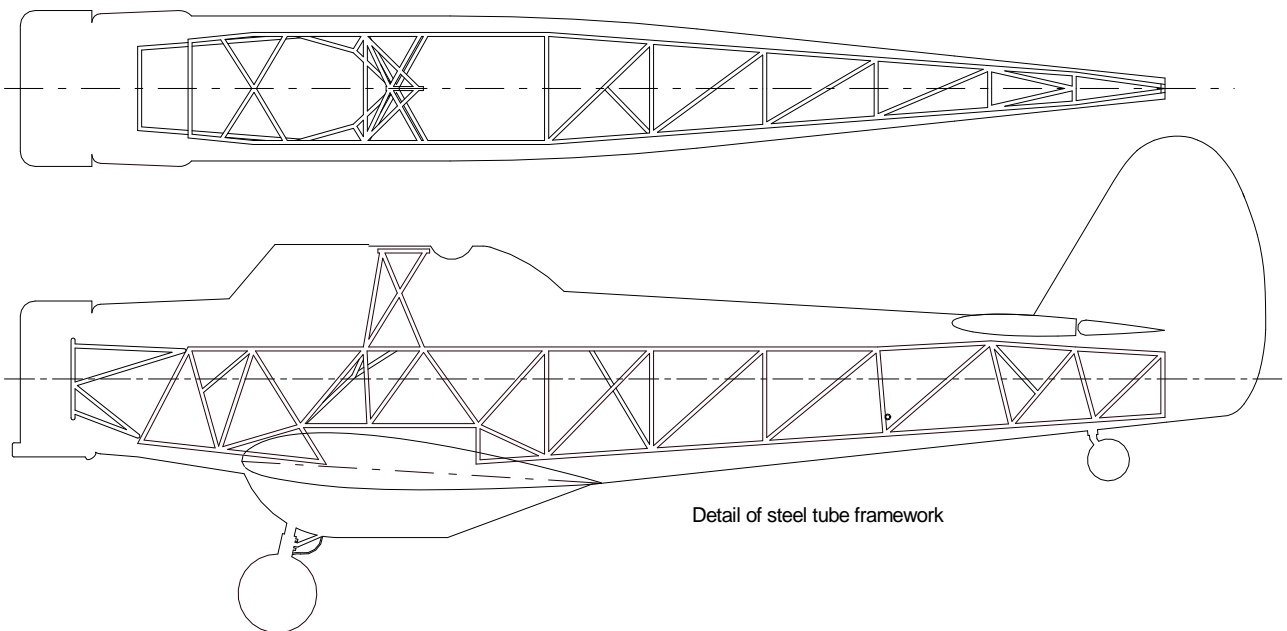
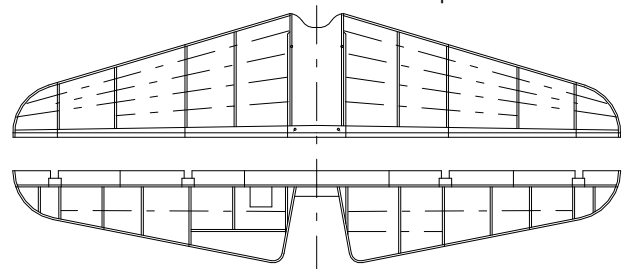
Spreading configuration with louvre on hopper outlet

Wing and aileron structure:
Wooden spars, ribs, stringers and skin



Structure of fin and rudder. Wooden spars, ribs, stringers and plywood skins

Tail-plane and elevator structure:
Wooden spars and ribs



Detail of steel tube framework

Kingsford Smith Aviation Services KS-3 Cropmaster
1957-59



Drawn by Derek Buckmaster © 2003
for the DB Design Bureau website

Plate 3 of 3

